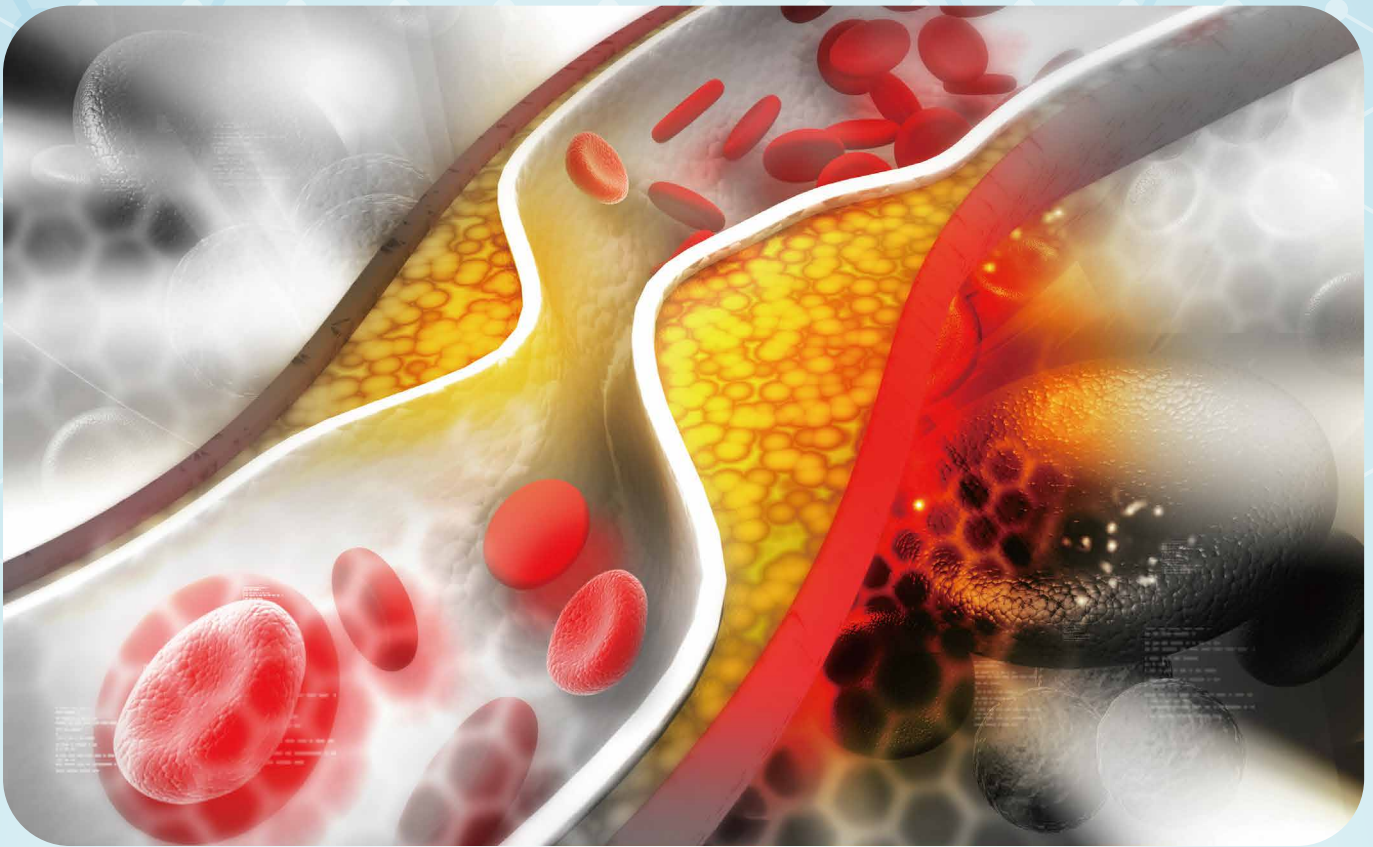


CRP latex reagent intermediate



C-reactive protein

CRP is a protein discovered as a substance that reacts with C-polysaccharide of pneumococcal bacterial cells.

CRP is a typical inflammatory marker, which is increased in acute inflammation or diseases that break down tissues.

Since measured values of CRP are rapidly decreased once the disease state has improved, **CRP is useful for diagnosing the state of a disease, prognostication, and the determination of therapeutic effect.**

Clinical significance

CRP is an indicator of activity, severity, disease course, and prognostication of inflammatory diseases such as infections and collagen diseases.

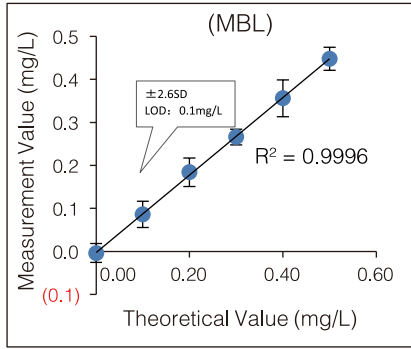
CRP is useful for monitoring several inflammatory diseases.

CRP is useful for evaluating neonatal infections (sepsis).

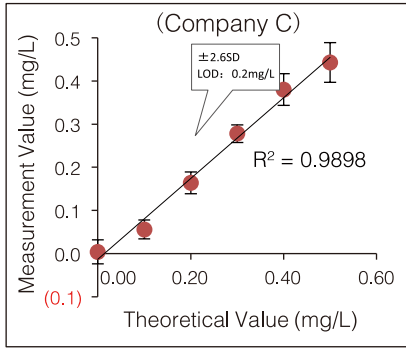
Given that CRP reacts early and disappears faster than the erythrocyte sedimentation rate (ESR), it is the most sensitive indicator when evaluating the strength of inflammation in acute inflammation.

Product performance

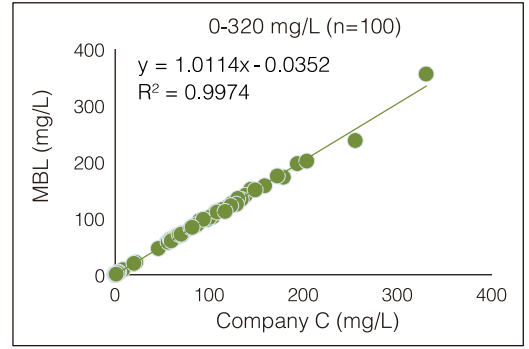
▶ Sensitivity (LOD: $\pm 2.65D$ Method)



More sensitive than competing products.

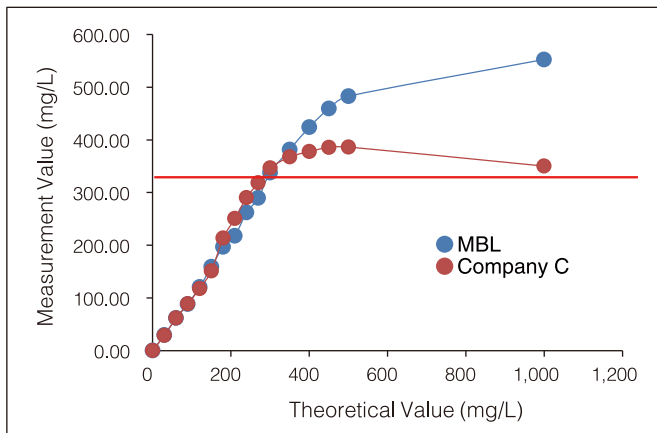


▶ Correlation



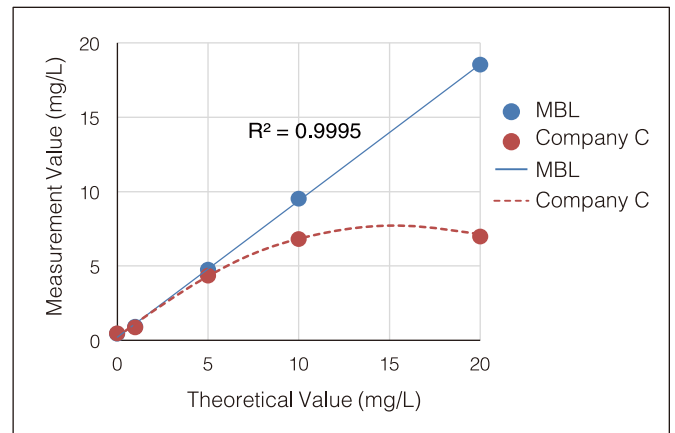
Excellent correlation with Japanese reagents.

▶ Prozone



Compared with reagents available in Japan, our reagent is superior in terms of the prozone effect.

▶ Whole blood sample test



Whole blood can be used as a sample: Direct measurement can be done without diluting samples.

Product specification

Measurement range: 0.1 ~ 320 mg/L

Coefficient of variation: $CV \leq 10\%$

Product Name	Items	Ratio	S/R1/R2 (μ L)	Wave (Sub/Main)(Hitachi7180)
CRP	CRP 01	3:1	2.0/100/100	800/570
	CRP Calibrator	6 levels	Liquid	
	CRP QC	2 levels		

References

1. Clyne B. *et al.* The C-reactive protein. The Journal of Emergency Medicine. 1999, vol.17, issue.6, p.1019-1025.

Research and development of MBL's latex intermediate reagent in Japan has revealed outstanding performance and high quality.

We provide latex immunoturbidimetric intermediate reagents coated with appropriate antibodies in response to the needs of diagnostic reagent companies.

Please ask our sales representatives concerning our samples and technical information.