

MONOCLONAL ANTIBODY

Anti-LYPD3 (C4.4A) (Human) mAb

Code No.	Clone	Subclass	Quantity	Concentration
W086-3	3F5A1	Mouse IgG2a κ	100 μ L	1 mg/mL

BACKGROUND: LY6/PLAUR domain containing 3 protein (LYPD3), also known as C4.4A, is a GPI-anchored metastasis-associated protein. LYPD3 is weakly expressed in the esophagus and peripheral blood mononuclear cells, whereas significantly over-expressed in a variety of tumor cell lines, primary lung tumors as well as metastatic melanomas.

SOURCE: This antibody was purified from hybridoma culture supernatant by Protein A affinity column chromatography.

IMMUNOGEN: Human LYPD3 (C4.4A) expressed Ba/F3 transfectants generated from SST-REX (signal sequence trap by retrovirus-mediated expression screening).

FORMULATION: 100 μ g IgG in 100 μ L volume of PBS containing 50% glycerol, pH 7.2. No preservative is contained.

STORAGE: This antibody solution is stable for one year from the date of purchase when stored at -20°C.

REACTIVITY: This antibody reacts with human LYPD3 (C4.4A) on Flow cytometry.

APPLICATIONS:

- Flow cytometry: 1-10 μ g/mL
- Western blotting: Not tested
- Immunoprecipitation: Not tested
- Immunohistochemistry: Not tested
- Immunocytochemistry: Not tested

Detailed procedure is provided in the following **PROTOCOL.**

INTENDED USE:

For Research Use Only. Not for use in diagnostic procedures.

Entrez Gene ID:

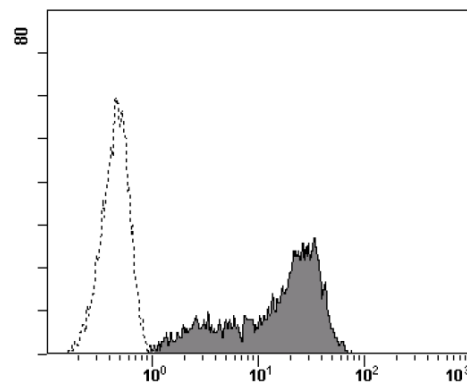
27076 (Human)

REFERENCES:

- 1) Hansen, L. V., *et al.*, *Biochem. J.* **380**, 845-857 (2004)
- 2) Fletcher, G. C., *et al.*, *Br. J. Cancer* **88**, 579-585 (2003)
- 3) Smith, B., *et al.*, *Cancer Res.* **61**, 1678-1685 (2001)
- 4) Würfel, J., *et al.*, *Gene* **262**, 35-41 (2001)
- 5) Kojima, T and Kitamura, T. *Nat. Biotechnol.* **17**, 487-490 (1999)

SPECIES CROSS REACTIVITY:

Species	Human	Mouse	Rat	Hamster
Cells	Transfectant	Not tested	Not tested	Not tested
Reactivity on FCM	+			



Flow cytometric analysis of human LYPD3 (C4.4A) expression on Ba/F3 transfectant. Open histograms indicate the reaction of isotypic control to the cells. Shaded histograms indicate the reaction of W086-3 to the cells.

PROTOCOL:

Flow cytometric analysis for floating cells

We usually use Fisher tubes or equivalents as reaction tubes for all steps described below.

- 1) Wash the cells 3 times with washing buffer [PBS containing 2% fetal calf serum (FCS) and 0.05% NaN_3].
- 2) Resuspend the cells with washing buffer (2.5×10^6 cells/mL).
- 3) Add 200 μ L of cell suspension into each tube. And centrifuge at 500 x g for 1 minute at room temperature (20~25°C). Remove supernatant by careful decantation.
- 4) Add 20 μ L of Clear Back (human Fc receptor blocking

reagent, MBL; code no. MTG-001) to the cell pellet after tapping. Mix well and incubate for 5 minutes at room temperature.

- 5) Add 50 μ L of the primary antibody at the concentration as suggest in the **APPLICATIONS** diluted in the washing buffer. Mix well and incubate for 30 minutes at room temperature.
- 6) Add 1 mL of the washing buffer followed by centrifugation at 500 x g for 1 minute at room temperature. Remove supernatant by careful decantation.
- 7) Add 50 μ L of 1:200 anti-mouse IgG-PE (Beckman Coulter; code no. IM0855) diluted with the washing buffer. Mix well and incubate for 30 minutes at room temperature.
- 8) Add 1 mL of the washing buffer followed by centrifugation at 500 x g for 1 minute at room temperature. Remove supernatant by careful decantation.
- 9) Resuspend the cells with 500 μ L of the washing buffer and analyze by a flow cytometer.

(Positive control for Flow cytometry; transfectant)

RELATED PRODUCTS:

W005-3	Anti-BTN2A1 (Human) mAb
W008-3	Anti-Carboxypeptidase D (Human) mAb
W011-3	Anti-Dystroglycan (Human) mAb
W017-3	Anti-EphA2 (Human) mAb
W029-3	Anti-IGFBP1 (Human) mAb
W050-3	Anti-RECK (Human) mAb
W086-3	Anti-LYPD3 (C4.4A) (Human) mAb
W089-3	Anti-C11orf24 (Human) mAb
W124-3	Anti-GPR56 (Human) mAb
W125-3	Anti-GPR56 (Human) mAb
W194-3	Anti-FAM171A1 (Human) mAb
W253-3	Anti-Glypican 1 (Human) mAb
W357-3	Anti-CD105 (Endoglin) (Human) mAb
W358-3	Anti-CD300A (Human) mAb
W359-3	Anti-CD300C (Human) mAb
M076-3	Mouse IgG2a (isotype control)
MTG-001	Clear Back (Human Fc receptor blocking reagent)