

QuickSwitch™ Quant Tetramer Kit

# QuickSwitch™ Quant HLA-A\*01:01 Tetramer Kit

## APPLICATION

The QuickSwitch™ Quant Tetramer Kit utilizes a patented technique for exchanging up to ten peptides on an MHC class I Tetramer. Components for quantifying the extent of peptide exchange by flow cytometry are included. New specificity Tetramers obtained by peptide exchange can then be used for identification of antigen-specific CD8<sup>+</sup> T lymphocytes in staining assays.

## SUMMARY AND EXPLANATION

Major histocompatibility complex (MHC)-encoded glycoproteins bind peptide antigens through non-covalent interactions to generate complexes that are displayed on the surface of antigen-presenting cells for recognition by T cells. Peptide-binding site occupancy is necessary for stable assembly of newly synthesized MHC proteins and export from the endoplasmic reticulum. During this stage peptides produced in the cytosol compete for binding to MHC molecules, resulting in extensive peptide exchanges that are regulated by accessory molecules, such as tapasin.<sup>1,2</sup> The QuickSwitch™ Quant Tetramer Kit is based on the capacity of MHC class I molecules to exchange peptides.

## PRINCIPLE

The kit contains two modules: 1) MHC class I Tetramer made from monomer units folded with an irrelevant exchangeable peptide, along with a proprietary Peptide Exchange Factor, for the generation of Tetramers loaded with specific peptides of interest and 2) a flow cytometry-based sandwich immunoassay containing antibody-conjugated magnetic beads to capture MHC class I Tetramers and a FITC-labeled antibody recognizing the Exiting Peptide. This assay measures the percentage of original peptide replaced by a competing peptide to help determine whether the resulting Tetramer is suitable for antigen-specific CD8<sup>+</sup> T cell staining (Note 1).

## KIT COMPONENTS

### QuickSwitch™ Tetramer

MHC class I Tetramer, whose monomer content is 50 µg/mL, in a buffered solution with added protein stabilizers and ≤0.09 % sodium azide (500 µL x 1 amber vial with amber cap). Keep away from direct light. Store at 2-8°C.

### Peptide Exchange Factor

The proprietary Peptide Exchange Factor #4 contains ≤0.09 % sodium azide (13 µL x 1 clear vial with green cap). Store at ≤ -20°C.

## Magnetic Capture Beads

Magnetic beads conjugated with a capture antibody specific for tetramers in a buffered solution with added protein stabilizers and ≤0.09 % sodium azide (500 µL x 1 clear vial with red cap). Store at 2-8°C.

## Exiting Peptide Antibody-FITC (25x)

FITC conjugated antibody reacting against the Exiting Peptide in a buffered solution with added protein stabilizers and ≤0.09 % sodium azide (25 µL x 1 amber vial with yellow cap). Store at 2-8°C protected from light. Do not freeze.

## Reference Peptide 5 mM

Peptide dissolved in DMSO at a 5 mM concentration (13 µL x 1 vial with black cap). Store at ≤ -20°C.

## Assay Buffer (10x)

Buffered solution with added protein stabilizers and ≤0.09 % sodium azide (1,700 µL x 1 vial with natural cap). Store at 2-8°C.

## CONJUGATES

PE tetramers are labeled with Streptavidin-Phycoerythrin (SA-PE), excitation 486–580 nm/emission 586–590 nm.

APC tetramers are labeled with Streptavidin-Allophycocyanin (SA-APC), excitation 633–635 nm/emission 660–680 nm.

BV421 tetramers are labeled with Streptavidin-Brilliant Violet™ 421 (SA-BV421), excitation maximum 405 nm/emission maximum 421 nm.

## STORAGE CONDITIONS

**Kit components in the bag (Code: TS-7308-1F, -2F, or -4F) store frozen at ≤ -20°C upon kit arrival: Reference Peptide and Peptide Exchange Factor.**

**Kit components in the box (Code: TS-7308-1R, -2R, or -4R) are stored at 2-8°C: Tetramer, Magnetic Capture Beads, Exiting Peptide Antibody-FITC, and Assay Buffer.**

## WARNINGS AND PRECAUTIONS

1. The Reference Peptide and concentrated Assay Buffer must be brought to room temperature (20-25°C) before use.
2. QuickSwitch™ Tetramer and Exiting Peptide Antibody are light sensitive and therefore should be protected from light during storage and during all the steps of the assay.
3. When Assay Buffer (10x) is stored at 2-8°C, some reversible precipitation or turbidity may appear. Incubation

at 37°C for a few minutes prior to use is recommended to re-solubilize salts.

- Avoid microbial contamination of all reagents involved in the testing procedure or incorrect results may occur.
- Incubation times or temperatures other than those specified may give erroneous results.
- Care should be taken to avoid splashing and well cross-contaminations.
- Most solutions contain sodium azide ( $\leq 0.09\%$ ) as preservative. Sodium azide under acid conditions yields hydrazoic acid, an extremely toxic compound. Azide compounds should be flushed with running water while being discarded. These precautions are recommended to avoid deposits in metal piping in which explosive conditions can develop. If skin or eye contact occurs, wash excessively with water.
- Diluted solutions (antibody and assay buffer) have to be used on the same day as they are prepared. Therefore it is advised to prepare the exact required volumes just before using them.

## PROCEDURE

This assay has been optimized for medium affinity and high affinity peptides.

## MATERIALS REQUIRED BUT NOT SUPPLIED

- Flow cytometer
- Plate shaker (Labline model 4625 or equivalent)
- Sonicator (Branson Ultrasonic Cleaner Model #B200 or equivalent)
- Magnetic tray for microplate (Note 2)
- Vortex
- Calibrated adjustable precision single channel micropipettes (for volumes between 1  $\mu\text{L}$  and 1000  $\mu\text{L}$ ) with disposable tips
- Round or conical bottom microplates
- Microtubes
- Aluminum foil
- Distilled or purified water
- DMSO
- Peptides for new specificity tetramers

## TEST PROCEDURE

Carefully read this protocol before performing an assay. Bring all the reagents to room temperature prior to start and centrifuge briefly to pull liquid to the bottom of the tubes.

### A. Generation of New Specificity Tetramer Using Peptide Exchange

Prior to performing the assay, bring to room temperature Peptide Exchange Factor and peptides to be used in the assay.

- Dissolve each lyophilized peptide to be assayed in DMSO to a 10 mM solution ( $\sim 10\text{ mg/mL}$  for a 9 amino acid peptide). (Note 3)
- Pipet 50  $\mu\text{L}$  of QuickSwitch™ Tetramer into a microtube or well of round- or conical-bottom 96 well microtiter plate.
- Add 1  $\mu\text{L}$  of peptide and mix gently with pipetting. (Note 4)

- Add 1  $\mu\text{L}$  of Peptide Exchange Factor from green capped vial and mix gently with pipetting.
- Repeat steps 1-4 for each additional peptide, including the Reference Peptide, if desired. (Note 5)
- Incubate for 16-24 hours at room temperature protected from light. (Note 6).
- Tetramers are now ready for use in quantitation (see section B) and/ or staining assays. (Note 7) Tetramers generated with the Reference Peptide are used as a positive control for exchange quantitation (see Section B).
- Refrigerate tetramers at 2-8°C protected from light when not used.

Note that peptide exchange reaction volumes can be scaled up or down, so long as reagent proportions are maintained.

### B. Quantification of Peptide Exchange Using Flow Cytometric Sandwich Immunoassay

- Prepare 1x Assay Buffer as follows: for 1-5 peptide exchanges, prepare 7.5 mL by mixing 750  $\mu\text{L}$  of 10x concentrated Assay Buffer with 6.75 mL of distilled water. For 6-10 exchanges, double the volumes.
- Immediately before use, vortex the tetramer capture beads for 30 seconds, followed by a 30-second sonication in a water bath sonicator. If no sonicator is available, vortex an additional 30 seconds.

Fig. 1 describes a capture assay in which five peptide-exchanged tetramers are tested. The yellow-filled wells are dedicated to controls which must be included in every assay.

FIG. 1

		Step 1	Step 2 (45 min incubation)	Step 3 (Rinse)	Step 4 (45 min incubation)	Step 5 (Rinse)	Step 6 (Resuspension in Assay Buffer)
Beads only Control	Well A1		+5 $\mu\text{L}$ QuickSwitch™ Tetramer (well #1)		+25 $\mu\text{L}$ Assay Buffer/well		
0% Exiting Peptide (100% exchange)	Well A2		+5 $\mu\text{L}$ Assay Buffer (well #2)				
100% Exiting Peptide (0% exchange)	Well A3		+5 $\mu\text{L}$ QuickSwitch™ Tetramer (well #3)	+150 $\mu\text{L}$ Assay Buffer/well			
Test Peptides (Reference peptide optional)	Well A4	+20 $\mu\text{L}$ HLA-ABC Magnetic Capture Beads/well	+5 $\mu\text{L}$ QuickSwitch™ Tetramer/peptide A		+25 $\mu\text{L}$ Exiting Peptide Antibody/well		
	Well A5		+5 $\mu\text{L}$ QuickSwitch™ Tetramer/peptide B			+150 $\mu\text{L}$ Assay Buffer/well	
	Well A6		+5 $\mu\text{L}$ QuickSwitch™ Tetramer/peptide C				+200 $\mu\text{L}$ Assay Buffer/well
	Well A7		+5 $\mu\text{L}$ QuickSwitch™ Tetramer/peptide D				
	Well A8		+5 $\mu\text{L}$ QuickSwitch™ Tetramer/peptide E				

#### Step 1 (Dispensing capture beads).

- Into each of three wells of a round or conical-bottom 96 well microtiter plate, pipet 20  $\mu\text{L}$  Magnetic Capture Beads for essential controls.
- Pipet 20  $\mu\text{L}$  Magnetic Capture Beads to additional wells for each peptide-exchanged tetramer to test.

#### Step 2 (Tetramer capture).

- Pipet 5  $\mu\text{L}$  1x Assay Buffer in well #2.
- Pipet 5  $\mu\text{L}$  QuickSwitch™ Tetramer in wells #1 and #3.
- In well #4, pipet 5  $\mu\text{L}$  taken from the first peptide exchange microtube or well of 96 well microtiter plate. Repeat for each additional peptide exchange in adjacent wells.

- Shake plate for 45 min. at 550 rpm, protected from light with an opaque cover such as a piece of aluminum foil.

**Step 3 (Rinse).**

- Dispense 150 µL of 1x Assay Buffer in each well.
- Place the plate on a magnetic tray, protected from light, and let beads sediment for at least 5 min. Meanwhile, prepare a dilution of the Exiting Peptide Antibody.
- While holding microplate tightly to the magnet, flick the plate and blot on a paper towel to minimize cross-contamination of wells. After returning plate upright, vortex for 2 seconds to disperse the beads.

**Step 4 (Bead incubation with Exiting Peptide Antibody).**

- Dilute 25x Exiting Peptide Antibody to 1x as follows: Determine the number (n) of samples to stain with the antibody, including controls #2 and #3. Add one (+1), to account for pipetting errors. In a microtube, pipet (n+1) x 24 µL of Assay Buffer and then add (n+1) x 1 µL of Exiting Peptide Antibody. Mix by pipetting.
- Pipet 25 µL of 1x Exiting Peptide Antibody in all wells, except well #1.
- Pipet 25 µL of 1x Assay Buffer in well #1.
- Shake plate for 45 min. at 550 rpm, protected from light.

**Step 5 (Rinse).**

- Wash with 150 µL/well of 1x Assay Buffer as in Step 3.

**Step 6 (Flow Acquisition).**

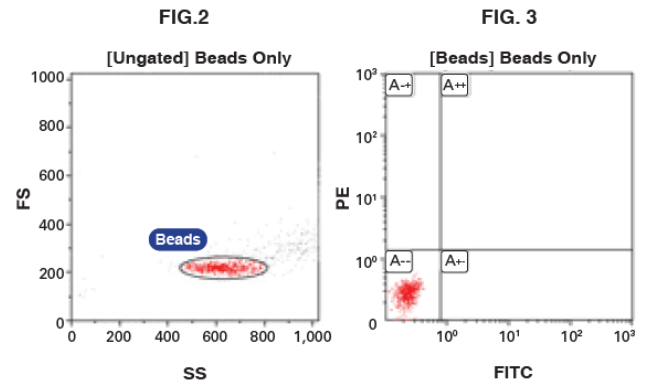
- Resuspend beads in 200 µL 1x Assay Buffer and acquire on a flow cytometer, ideally within 3 hours, collecting at least 300-500 events per sample in order to obtain reliable data.

**FLOW CYTOMETRY SET UP AND DATA ANALYSES**

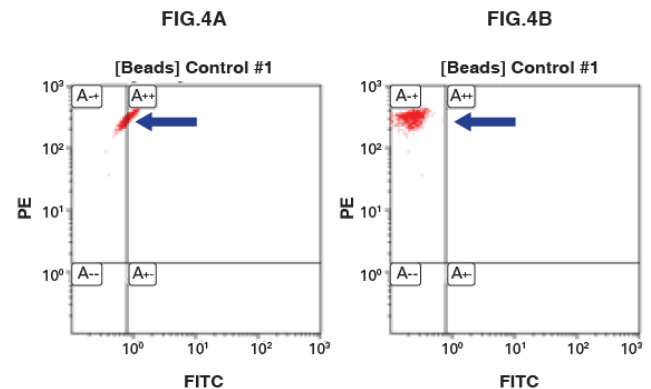
- Pipet 5 µL of Magnetic Capture Beads from the red cap vial to a flow cytometer tube containing 200 µL 1x Assay Buffer and run as a “beads only” control.
- Adjust FSC and SSC voltages, gains, and threshold such that bead events are on scale.
- Gate singlet beads based on FSC and SSC parameters, excluding doublets and aggregates (Fig. 2).
- Set voltages and gains for FITC and second fluorochrome (PE, APC or BV421) such that “beads only” mean fluorescence intensities (MFI) are in the first log decade (Fig. 3). Note the MFI of the FITC channel (MFI<sub>FITC</sub>).
- Run control #1 (bead-captured QuickSwitch™ Tetramer), adjusting compensation such that the MFI<sub>FITC</sub> of bead control #1 equals the MFI<sub>FITC</sub> of the “Beads Only” control (see Fig. 4A, uncompensated, and Fig. 4B, compensated). *Values shown are for demonstration purposes only and will vary based on experiment and flow cytometer.*
- Run control #2, beads that have not captured any tetramer and therefore have no Exiting Peptide. The low MFI<sub>FITC</sub> corresponds to 0% Exiting Peptide or 100% peptide exchange (Fig. 5). Note the MFI<sub>FITC</sub>.
- Run control #3, beads that have captured the

QuickSwitch™ Tetramer, which have an MFI<sub>FITC</sub> that corresponds to 100% Exiting Peptide or 0% peptide exchange (Fig. 6). Note the MFI<sub>FITC</sub>.

- Run samples from well #4 and subsequent peptide exchange samples, noting the MFI<sub>FITC</sub> of each. Peptide-exchanged tetramers will display various Exiting Peptide amounts, which are inversely proportional to the newly loaded peptide on the MHC molecules. Consequently, the measured MFI<sub>FITC</sub> will be intermediary between MFI values obtained with bead controls #2 and #3 (Fig. 7).



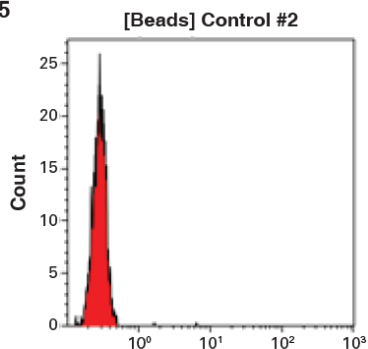
Gate	X-G Mean	Y-G Mean
A--	0.23	0.27
A-+	N/A	N/A
A+-	N/A	N/A
A++	N/A	N/A



Gate	X-G Mean	Y-G Mean
A--	N/A	N/A
A-+	0.70	251.43
A+-	N/A	N/A
A++	0.91	328.63

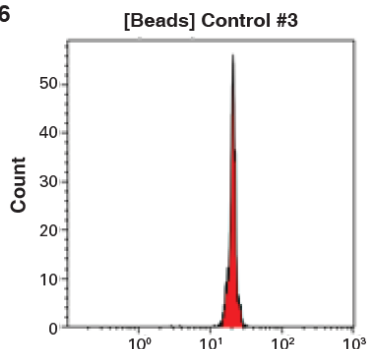
Gate	X-G Mean	Y-G Mean
A--	N/A	N/A
A-+	0.23	305.33
A+-	N/A	N/A
A++	N/A	N/A

FIG.5



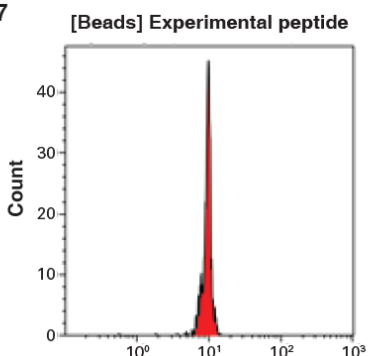
Gate X-GMean  
 All 0.28

FIG.6



Gate X-GMean  
 All 20.38

FIG.7



Gate X-GMean  
 All 9.37

“FALSE” response, as indicated in row E.

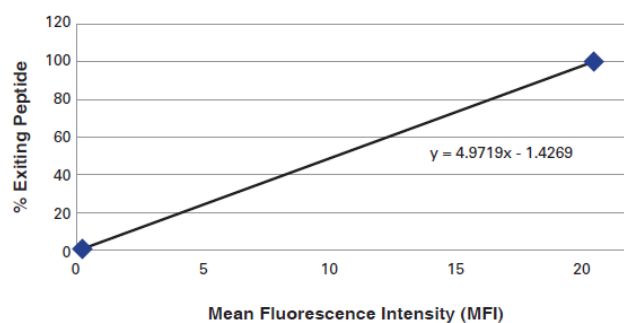
Table 2

Peptide Sample	QuickSwitch Tetramer MFI <sub>FITC</sub> after Peptide Exchange	% Peptide Exchange
A	9.37	54.78
B	5.29	75.07
C	2.12	90.85
D	1.29	94.98
E	22	FALSE
F	0.11	100.85

### CALCULATION OF RESULTS USING EXCEL OR OTHER SOFTWARE

1. Generate a linear curve by plotting the MFI<sub>FITC</sub> obtained with controls #2 and #3 against percent Exiting Peptide detected, 0% and 100%, respectively, as shown in the example below using the QuickSwitch™ Tetramer (Fig. 8).

Fig. 8



2. Use the linear curve equation for calculating the percentages of peptide exchange by entering the MFI<sub>FITC</sub> of each peptide-exchanged sample as the variable (X), as shown in the example below using the QuickSwitch™ Tetramer (Table 3).

Table 3

Analyzed sample	MFI (X)	% of Exiting Peptide (Y)	% peptide exchange (100-Y)
Control #2	0.28	0	100
Control #3	20.38	100	0
Test peptide	9.37	45.22	54.78

### USE OF THE REFERENCE PEPTIDE

The Reference Peptide included in the kit serves as a positive control for peptide exchange of the QuickSwitch™ Tetramer.

Percentage of peptide exchange obtained with the Reference Peptide for HLA-A\*01:01 is shown in Table 4.

Table 4

	Reference Peptide
Stock Concentration	5 mM
Final Concentration	100 μM
Peptide Exchange (N=3)	100 ± 0.01 %

### CALCULATION OF RESULTS USING QUICKSWITCH™ DOWNLOADABLE CALCULATOR

The QuickSwitch™ Calculator on the MBL website (<https://ruo.mbl.co.jp/bio/product/allergy-Immunology/images/QuickSwitchTM-Quant-Peptide-Exchange-Calculator.xls>) can be downloaded for determining percentages of peptide exchange, as shown in the example below using an MHC class I QuickSwitch™ Tetramer and corresponding peptides (Tables 1-2).

1. Enter the MFI<sub>FITC</sub> associated with bead controls #2 and #3.

Table 1

Analyzed sample	MFI <sub>FITC</sub>
Control #2: 0% Exiting Peptide (100% peptide exchange)	0.28
Control #3: 100% Exiting Peptide (0% peptide exchange)	20.38

2. Enter the MFI obtained with the different tests (2nd column) to obtain the percentages of peptide exchange. Note that the calculator provides results only for MFI values below control #3. Higher values will return a

## LIMITATIONS

1. The QuickSwitch™ Quant Tetramer Kit has been devised mainly for exploratory research such as testing whether a peptide binds to MHC or for quickly determining presence/absence of an MHC/peptide specific CD8<sup>+</sup> T cell population in donor leukocytes. These tetramers are not intended to be a substitute for tetramers classically manufactured by folding of peptide with MHC and tetramerization with fluorochrome-conjugated streptavidin (Note 8).
2. Once diluted, the Exiting Peptide Antibody is stable at room temperature for up to 6 hours (protect from light).
3. Do not mix components from other lots and kits (such as QuickSwitch™ tetramer kits) as compositions and concentrations of components are different from kit to kit. In particular, Peptide Exchange Factor cannot be interchanged between kits due to potential incompatibility issues.

## NOTES

1. Tetramers bind to T cell receptors via three MHC/peptide monomers.<sup>3,4</sup> Therefore the minimal recommended peptide exchange percentage should be 75%. The QuickSwitch™ Tetramer concentration is 50 µg/mL, measured by MHC monomer content. Depending on the T cell receptor affinity towards the MHC/peptide complex, cell stainings require 0.5 ng to 2 µg tetramer per reaction.<sup>5,6</sup>
2. This current protocol uses a magnet to pellet the beads. If a magnet is unavailable, it is possible to pellet beads by centrifugation at 300 g for 10 minutes. In that case, plates can be flicked like cells, without magnet. Centrifugating beads is not recommended because this could result in tetramer aggregation and/or bead clumping and bead loss in some cases.
3. Most of peptides are soluble in DMSO. However, some highly basic or acidic peptides may precipitate in DMSO and would require alternative buffers.
4. The final peptide concentration is 100 µM in this assay. Note that the peptide working concentration is higher than in most QuickSwitch™ kits (such as HLA-A\*02:01 QuickSwitch™).
5. The Reference Peptide can be included as a positive control for peptide exchange. As an example, the high affinity binding HLA-A\*01:01 Reference Peptide typically undergoes a > 90% exchange when used a final 100 µM solution (see Table 4).
6. This peptide exchange assay requires a longer reaction time unlike most QuickSwitch™ Quant kits.
7. Tetramers obtained by peptide exchange are used directly for cell staining. However, the user may want to dialyze or desalt the tetramers to remove excess peptide, which may interfere with staining or cause tetramer aggregation. MBL recommends simultaneous staining of class I tetramer with anti-CD8 and other antibodies for 30 minutes at room temperature.
8. Avidity of peptide-exchanged tetramers will depend on the percentage of peptide exchange. Classical tetramers made with monomers generated by folding always present 100% specific peptide and therefore display

maximal avidity.

9. The sequence of the HLA-A\*01:01 reference peptide is irrelevant. Exchanged tetramers generated with this peptide can therefore be used as negative controls in tetramer T cell stainings (see Fig. 10).

## REFERENCES

1. Reaper DR, Cresswell P. 2008. Regulation of MHC class I assembly and peptide binding. *Annu Rev Cell Dev Biol.* 24:343-368.
2. Mayerhofer PU, Tampé R. 2015. Antigen translocation machineries in adaptive immunity and viral immune evasion. *J Mol Biol.* 427(5):1102-1118.
3. Wooldridge L, van den Berg HA, Glick M, Gostick E, Laugel B, Hutchinson SL, Milicic A, Brenchley JM, Douek DC, Price DA, Sewell AK. 2005. Interaction between the CD8 coreceptor and major histocompatibility complex class I stabilizes T cell receptor-antigen complexes at the cell surface. *J Biol Chem.* 280:27491-27501.
4. Wooldridge L, Lissina A, Cole DK, van den Berg HA, Price DA, Sewell AK. 2009. Tricks with tetramers: how to get the most from multimeric peptide-MHC. *Immunology.* 126(2):147-164.
5. Price DA, Brenchley JM, Ruff LE, Betts MR, Hill BJ, Roederer M, Koup RA, Migueles SA, Gostick E, Wooldridge L, Sewell AK, Connors M, Douek DC. 2005. Avidity for antigen shapes clonal dominance in CD8 T cell populations specific for persistent DNA viruses. *J. Exp. Med.* 202:1349-1361.
6. Mielke S, Nunes R, Rezvani K, et al. 2008. A clinical-scale selective allodepletion approach for the treatment of HLA-mismatched and matched donor-recipient pairs using expanded T lymphocytes as antigen-presenting cells and a TH9402-based photodepletion technique. *Blood.* 111:4392-4402.

## RELATED PRODUCTS:

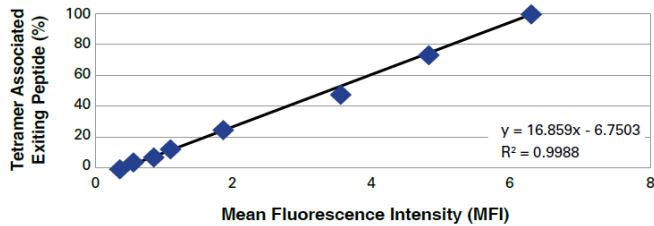
Please visit our website at <https://ruo.mbl.co.jp/>

## REPRESENTATIVE DATA

### Peptide Exchange quantitation curve is linear.

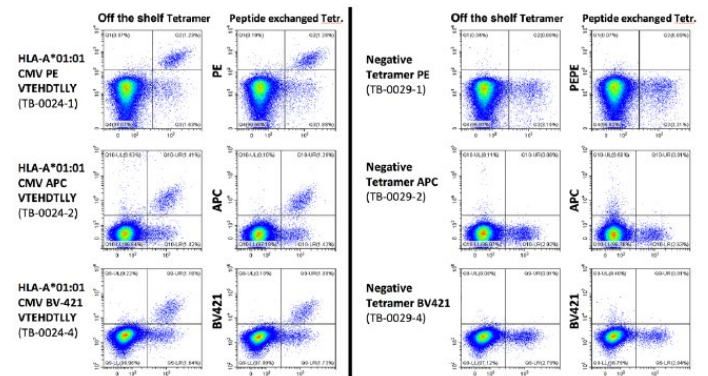
Tetramers containing various percentages of Exiting Peptide were analyzed using the flow cytometric sandwich immunoassay to quantify peptide exchange. The generated curve was linear, as shown in Fig. 9, indicating that two controls (0% and 100% peptide exchange controls) are sufficient for generating the peptide exchange quantitation curve.

Fig. 9



### Fig. 10. HLA-A\*01:01 Peptide-exchanged QuickSwitch™ tetramers perform similarly to their off the shelf counterparts in flow cytometry.

CD3<sup>+</sup> PBMCs are stained with an off the shelf tetramer made with a classically folded monomer or with peptide exchanged QuickSwitch™ tetramers. Tetramers exchanged with the HLA-A\*01:01 reference peptide are negative against CD8 cells. Samples containing 2.5 x 10<sup>5</sup> cells in 50 µL PBS-BSA-NaN<sub>3</sub> buffer were stained for 30 min at RT with 1 µL of anti CD3-PC5 mAb (clone UCHT1) or CD3-PC7 (clone SK7), 1 µL anti CD8-FITC mAb (clone T8) and 0.25 µg tetramer. Cells were fixed with a 0.5% formaldehyde PBS solution. Cells were analyzed on a Cytoflex flow cytometer (Beckman Coulter). Cell doublets were discriminated using SSC-W/SSC-A gating.



The products with code “TB” shown in Fig.10 are available as the following products.

- TB-0024-1: T-Select HLA-A\*01:01 CMV pp50 Tetramer-VTEHDITLLY-PE (MBL code# TS-0024-1C)
- TB-0024-2: T-Select HLA-A\*01:01 CMV pp50 Tetramer-VTEHDITLLY-APC (MBL code# TS-0024-2C)
- TB-0024-4: HLA-A\*01:01 CMV pp50 Tetramer-VTEHDITLLY-BV421 (MBL code# TS-0024-4C)
- TB-0029-1: HLA-A\*02:01 Negative Tetramer-PE (MBL code# TS-0029-1C)
- TB-0029-2: HLA-A\*02:01 Negative Tetramer-APC (MBL code# TS-0029-2C)
- TB-0029-4: HLA-A\*02:01 Negative Tetramer-BV421 (MBL code# TS-0029-4C)

### TROUBLESHOOTING BEAD QUANTITATION

Problems	Potential Causes	Potential Solutions
Beads not found	Threshold/trigger on cytometer set too high	Refer to your flow cytometer manual to adjust threshold/trigger appropriate for microparticles.
	Interfering substances in samples	Make sure solutions are not contaminated.
	Flow cytometer instrument is out of calibration	An uncalibrated machine will give erroneous results. Follow the manufacturer's calibration recommendations.
Low Bead Count	Improper bead preparation	Make sure to vortex and sonicate beads immediately before use.
	Incorrect bead density	Make sure correct volumes of beads are dispensed into wells.
	Insufficient time for bead sedimentation on the magnet	Be sure to let the beads sediment for at least 5 minutes.
		If using more than 150 µL for washes, the bead sedimentation time must be increased.
Sample lost during washing and flicking	Maintain close contact between the microplate and the magnet.	
High Background	Spillover from adjacent well(s) if exchange was performed in a plate	Use individual tubes instead of plate for exchange.
	Reagents contaminated	Store in a cool, dry place and do not pipet into vials.
	Improper washing	Use clean tips for washing and make sure not to cross-contaminate wells.
		Make sure washing protocol is followed strictly and that all wells are emptied before moving to the next step.
Aggregation	Work with lower peptide concentrations.	
No Signal or Low Signal	MHC tetramer or Exiting Peptide Antibody are too dilute or absent	Make sure that the correct volumes and dilutions of MHC tetramer and Exiting Peptide Antibody are used.
	Incorrect compensation and/or voltages set too low	Set voltages so that negative control is on scale, in the first decade. Check compensation controls and resulting comp matrix.
	Incorrect incubation times	Follow exactly the incubation times indicated in the protocol.
	Degraded reagent(s) are used in the assay	Make sure that all reagents are stored correctly.

### TROUBLESHOOTING TETRAMER STAINING

Problems	Potential Causes	Potential Solutions
High Background	Spillover from adjacent well(s) if exchange was performed in a plate	Use individual tubes instead of plate for exchange.
	Reagents contaminated	Store in a cool, dry place and do not pipet into vials.
	Peptide aggregation	Work with lower peptide concentrations.
	Aggregation	Perform doublet discrimination (e.g. plot FSC-H x FSC-A and gate on diagonal population representing single cell events).
		Dialyze tetramer.
		Decrease peptide concentration in exchange reaction.
	Incorrect compensation	Check compensation controls and resulting comp matrix.
Impure T cell population	Perform positive gating (e.g. CD3, CD8) to identify T cells and/or incorporated a dump channel to eliminate non-T cells (e.g. B cell and monocyte markers).	
Contamination with dead cells	Use a viability dye and gate out dead/dying cells.	
No Signal or Low Signal	MHC tetramer is too dilute or absent	Perform cross-titration of tetramer and CD8 antibody.
	Incorrect compensation and/or voltages set too low	Set voltages so that negative control is on scale, in the first decade. Check compensation controls and resulting comp matrix.
	Incorrect incubation times	Follow exactly the incubation times indicated in the protocol.
	Degraded reagent(s) are used in the assay	Make sure that all reagents are stored properly.
	No antigen-specific T cells present in sample	Obtain positive control target cells to verify tetramer staining (e.g. generate antigen-specific T cells using mixed lymphocyte peptide cultures method).