

**For Research Use Only.
Not for use in diagnostic procedures.**



Normal Chicken IgY-PE

CODE No. PM084-5

CLONALITY Polyclonal
ISOTYPE Chicken IgY
QUANTITY 1 mL (50 tests)

SOURCE Purified IgY from egg yolks

REACTIVITY No specific reaction was detected on Flow cytometry.

FORMULATION PBS containing 1% BSA and 0.09% NaN₃

*Azide may react with copper or lead in plumbing system to form explosive metal azides. Therefore, always flush plenty of water when disposing materials containing azide into drain.

STORAGE This antibody solution is stable for one year from the date of purchase when stored at 4°C.

APPLICATION

Flow cytometry

This antibody can be used as a negative control.

The concentration will depend on the conditions.

For more information, please visit our web site <http://ruo.mbl.co.jp/>



MEDICAL & BIOLOGICAL LABORATORIES CO., LTD.

URL <http://ruo.mbl.co.jp/>

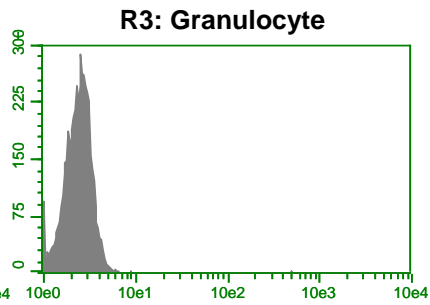
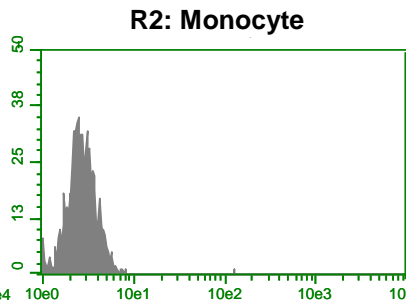
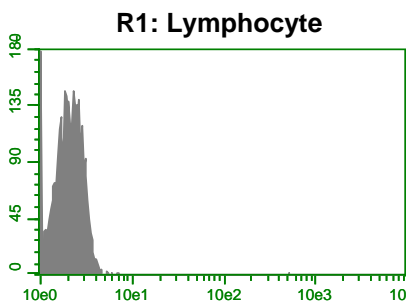
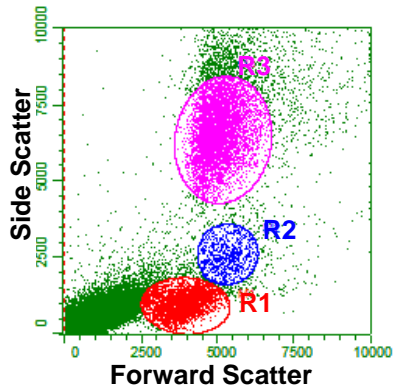
e-mail support@mbi.co.jp, TEL 052-238-1904

RELATED PRODUCTS

PM084	Normal Chicken IgY
PM084-4	Normal Chicken IgY-FITC
PM084-5	Normal Chicken IgY-PE
CM004-3	Anti-SynCAM (TSLC1/CADM1) mAb
CM004-4	Anti-SynCAM (TSLC1/CADM1) mAb -FITC
CM004-6	Anti-SynCAM (TSLC1/CADM1) mAb -Biotin
CM004-A64	Anti-SynCAM (TSLC1/CADM1) mAb -Alexa Fluor [®] 647
CM005-3	Anti-SynCAM (TSLC1/CADM1) (Human) mAb

Flow cytometric analysis for whole blood cells

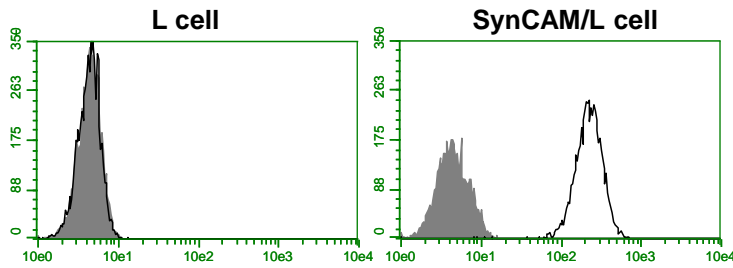
- 1) Dispense 100 μ L of whole blood into each tube.
- 2) Add 20 μ L of Normal Chicken IgY-PE (PM084-5). Mix well and incubate for 15 min. at room temperature.
- 3) Add 100 μ L of OptiLyse B (for analysis on BD instruments, Beckman Coulter; code no. IM-1400). Mix well and incubate for 10 min. at room temperature.
- 4) Add 1 mL of distilled water to each tube and incubate for 10 min. at room temperature.
- 5) Centrifuge at 500 x g for 1 min. at room temperature. Remove supernatant by careful aspiration.
- 6) Add 1 mL of PBS containing 2% FCS followed by centrifugation at 500 x g for 1 min. at room temperature. Remove supernatant by careful aspiration.
- 7) Resuspend the cells with 500 μ L of the washing buffer and analyze by a flow cytometer.



Flow cytometric analysis of Normal Chicken IgY on human PBMC
Antibody: Normal Chicken IgY-PE (PM084-5)

Flow cytometric analysis for cells

- 1) Wash the cells (2×10^5 cells/sample) 1 time with 1 mL of the washing buffer [PBS containing 2% fetal calf serum (FCS)].
- 2) Add 10 μ L of Clear Back (human Fc receptor blocking reagent, MBL; code no. MTG-001) to the cell pellet after tapping. Mix well and incubate for 10 min. at room temperature.
- 3) Add 20 μ L of Normal Chicken IgY-PE (PM084-5) comparable to those of the specific antibody of interest. Mix well and incubate for 15 min. at room temperature.
- 4) Wash the cells 1 time with 1 mL of the washing buffer.
- 5) Resuspend the cells with 500 μ L of the washing buffer and analyze by a flow cytometer.



Flow cytometric analysis of Normal Chicken IgY on human SynCAM transfectant

Open: Anti-SynCAM (TSLC1/CADM1) mAb-PE (CM004-5)

Closed: Normal Chicken IgY-PE (PM084-5)