

# Anti-CD326 (EpCAM) mAb-Biotin

**CODE No.** MEX004-6

**CLONALITY** Monoclonal  
**CLONE** B8-4  
**ISOTYPE** Mouse IgG1  $\kappa$   
**QUANTITY** 50  $\mu$ L, 1 mg/mL

**SOURCE** Purified IgG from hybridoma supernatant  
**IMMUNOGEN** Recombinant human CD326 (EpCAM), Fc fusion protein  
**FORMURATION** PBS containing 1% BSA and 0.1% ProClin 950  
**STORAGE** This antibody solution is stable for one year from the date of purchase when stored at 4°C.

## APPLICATIONS-CONFIRMED

Western blotting Not recommended  
Flow cytometry 5  $\mu$ g/mL  
Sandwich CLEIA Can be used. Please refer to "ExoDiluent for Immunoassay (MEX1001)" together.

## APPLICATION-UNDER EVALUATION

Sandwich ELISA Can be used.

## SPECIES CROSS REACTIVITY on FCM

Species	Human	Monkey	Mouse	Rat	Hamster
Cell	A549, MCF7	Not tested	Not tested	Not tested	Not tested
Reactivity	+				

**Entrez Gene ID** 4072 (Human)

## REFERENCES

- 1) van der Gun, BT., *et al.*, *Carcinogenesis* **31**, 1913-1921 (2010)
- 2) Rabinowits, G., *et al.*, *Clin. Lung Cancer* **10**, 42-46 (2009)
- 3) Marhaba, R., *et al.*, *Curr. Mol. Med.* **8**, 784-804 (2008)
- 4) Taylor, D.D. and Gercel-Taylor, C., *Gynecol. Oncol.* **110**, 13-21 (2008)
- 5) Koga, Y., *et al.*, *Gastroenterol. Res. Pract.* **2008**, 605273 (2008)
- 6) Spurr, N.K., *et al.*, *Int. J. Cancer* **38**, 631-636 (1986)

For more information, please visit our web site <http://ruo.mbl.co.jp/>

**RELATED PRODUCTS**Antibodies

MEX001-3	Anti-CD9 mAb (A100-4)
MEX001-6	Anti-CD9 mAb-Biotin (A100-4)
MEX002-3	Anti-CD63 (LAMP-3) mAb (C047-1)
MEX002-6	Anti-CD63 (LAMP-3) mAb-Biotin (C047-1)
MEX003-3	Anti-CD81 (TAPA1) mAb (A103-10)
MEX003-6	Anti-CD81 (TAPA1) mAb-Biotin (A103-10)
MEX004-6	Anti-EpCAM mAb-Biotin (B8-4)
D252-3	Anti-CD9 (Human) mAb (10H6)
D252-5	Anti-CD9 (Human) mAb-PE (10H6)
D131-3	Anti-CD9 (Mouse) mAb (JF9)
D131-4	Anti-CD9 (Mouse) mAb-FITC (JF9)
D263-3	Anti-CD63 (LAMP-3) (Mouse) mAb (R5G2.1)
D082-3	Anti-CD151 (SFA-1) (Human) mAb (SFA1.2B4)
D082-5	Anti-CD151 (SFA-1) (Human) mAb-PE (SFA1.2B4)
D050-3	Anti-CD29 (Integrin $\beta$ 1) (Human) mAb (AG89)
D050-5	Anti-CD29 (Integrin $\beta$ 1) (Human) mAb-PE (AG89)
D276-3	Anti-CD36 (GPIV) (Human) mAb (GS95)
D276-A48	Anti-CD36 (GPIV) (Human) mAb -Alexa Fluor <sup>®</sup> 488 (GS95)
D276-A64	Anti-CD36 (GPIV) (Human) mAb -Alexa Fluor <sup>®</sup> 647 (GS95)
D269-3	Anti-EpCAM (CD326) (Mouse) mAb (2-17-F1)
M075-6	Mouse IgG2a (isotype control)-Biotin (2E12)

Kits

EX-C9-SP	ExoCap <sup>™</sup> CD9 Kit for Serum Plasma
EX-C63-SP	ExoCap <sup>™</sup> CD63 Kit for Serum Plasma
EX-C81-SP	ExoCap <sup>™</sup> CD81 Kit for Serum Plasma
EX-EPC-SP	ExoCap <sup>™</sup> EpCAM Kit for Serum Plasma
EX-COM-SP	ExoCap <sup>™</sup> Composite Kit for Serum Plasma
MEX-E	ExoCap <sup>™</sup> Nucleic Acid Elution Buffer
MEX1001	ExoDiluent for Immunoassay
RN1001	RIP-Assay Kit

Others (reagents, equipments, etc.)

MJS002V2	Protein G-Magnetic Beads
3190	Magnetic Rack

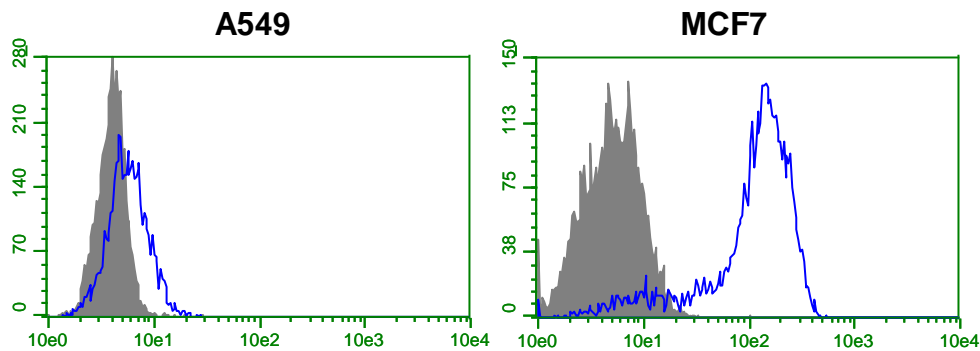
Other related antibodies and kits are also available.

Please visit our website at <http://ruo.mbl.co.jp/>

### **Flow cytometric analysis**

- 1) Wash the cells ( $5 \times 10^5$  cells/sample) 1 time with 1 mL of washing buffer [PBS containing 2% fetal calf serum (FCS)].
- 2) Add 10  $\mu$ L of Clear Back (human Fc receptor blocking reagent, MBL; code no. MTG-001) to the cell pellet after tapping. Mix well and incubate for 10 min. at room temperature.
- 3) Add 50  $\mu$ L of the primary antibody at the concentration as suggested in the **APPLICATION** diluted with washing buffer.
- 4) Mix well and incubate for 20 min. at room temperature.
- 5) Wash the cells 1 time with 1 mL of washing buffer.
- 6) Add FITC-conjugated streptavidin diluted with washing buffer. Mix well and incubate for 20 min. at room temperature.
- 7) Wash the cells 1 time with 1 mL of washing buffer.
- 8) Resuspend the cells with 500  $\mu$ L of the washing buffer and analyze by a flow cytometer.

(Positive controls for Flow cytometry; A549 and MCF7)



### ***Flow cytometric detection of human CD326 (EpCAM)***

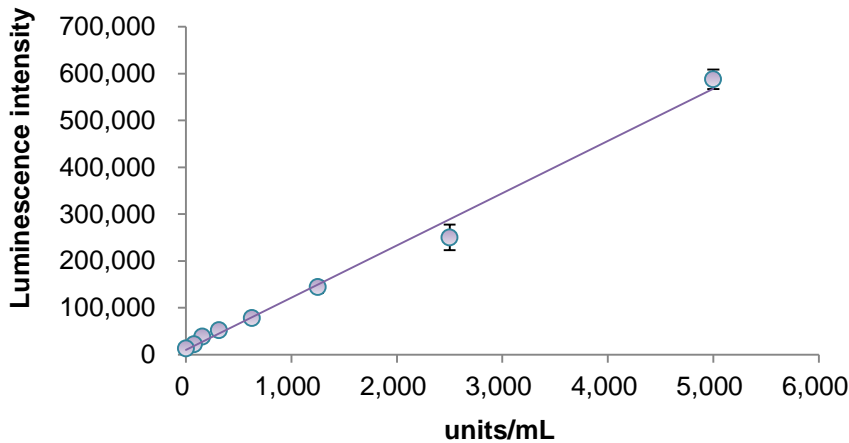
Left: A549

Right: MCF7

Open: Anti-CD326 (EpCAM) mAb-Biotin (MEX004-6)

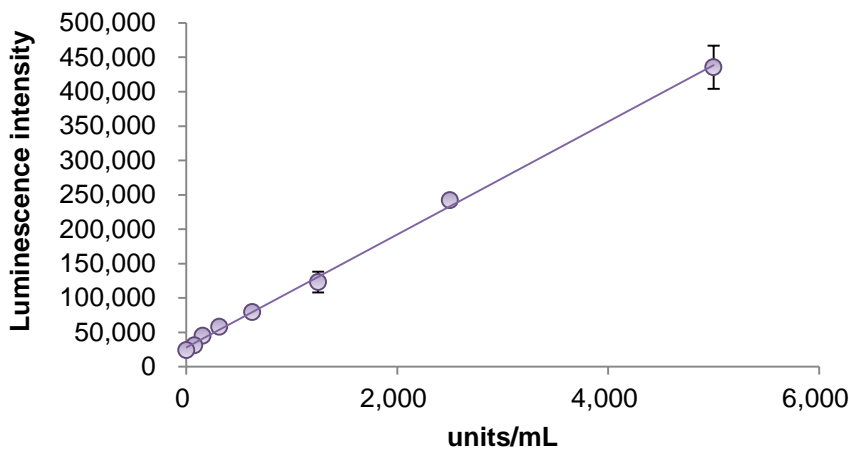
Closed: Mouse IgG1 (isotype control)-Biotin (M075-6)

**Sandwich CLEIA (chemiluminescence enzyme immunoassay)**



***Sandwich CLEIA for measurement of CD326 (EpCAM) expressed HT29-derived exosomes***

Sample: HT29-derived exosomes prepared by ultracentrifugation  
Capture Antibody: Anti-CD9 mAb (MEX001-3)  
Detection Antibody: Anti-CD326 (EpCAM) mAb-Biotin (MEX004-6)



***Sandwich CLEIA for measurement of CD326 (EpCAM) expressed HT29-derived exosomes***

Sample: HT29-derived exosomes prepared by ultracentrifugation  
Capture Antibody: Anti-CD81 (TAPA1) mAb (MEX003-3)  
Detection Antibody: Anti-CD326 (EpCAM) mAb-Biotin (MEX004-6)