

**For Research Use Only.**  
**Not for use in diagnostic procedures.**



 **My select** sampler set

# Anti-EEA1 mAb-Alexa Fluor<sup>®</sup> 488

**CODE No.** M176-A48MS

**CLONALITY** Monoclonal  
**CLONE** 3C10  
**ISOTYPE** Mouse IgG2a  $\kappa$   
**QUANTITY** 20  $\mu$ L, 1 mg/mL

**SOURCE** Purified IgG from hybridoma supernatant  
**IMMUNOGEN** Human EEA1, N-terminal (synthetic peptide)  
**FORMURATION** PBS containing 1% BSA and 0.09% NaN<sub>3</sub>.

\*Azide may react with copper or lead in plumbing system to form explosive metal azides. Therefore, always flush plenty of water when disposing materials containing azide into drain.

**STORAGE** This antibody solution is stable for one year from the date of purchase when stored at 4°C.

## APPLICATIONS-CONFIRMED

Immunocytochemistry 10  $\mu$ g/mL

## SPECIES CROSS REACTIVITY on WB

Species	Human	Mouse	Rat	Hamster
Cells	HeLa, A549	NIH/3T3, MEF	NRK	Not tested
Reactivity	+	+	+	

**Entrez Gene ID** 8411 (Human), 216238 (Mouse), 314764 (Rat)

**REFERENCES**  
1) Gaullier, J. M., *et al.*, *J. Biol. Chem.* **275**, 24595-24600 (2000)  
2) Mu, F. T., *et al.*, *J. Biol. Chem.* **270**, 13503-13511 (1995)

For more information, please visit our web site <http://ruo.mbl.co.jp/>

### LABEL LICENSES:

This product is provided under an agreement between LIFE TECHNOLOGIES Corporation, and Medical & Biological Laboratories Co., LTD, and the manufacture, use, sale or import of this product may be subject to one or more U.S. patents, pending applications, and corresponding non-U.S. equivalents, owned by or licensed to LIFE TECHNOLOGIES Corporation. For information on purchasing a license to this product for any other use, contact LIFE TECHNOLOGIES Corporation, Molecular Probes Detection Technologies, Business Development, 29851 Willow Creek Road, Eugene, OR 97402, USA, Tel: (541) 465-8300. Fax: (541) 335-0504.

Alexa Fluor<sup>®</sup> is a registered trademark of Molecular Probes, Inc.



**MEDICAL & BIOLOGICAL LABORATORIES CO., LTD.**

URL <http://ruo.mbl.co.jp/>

e-mail [support@mbi.co.jp](mailto:support@mbi.co.jp), TEL 052-238-1904

**RELATED PRODUCTS**

M176-3 Anti-EEA1 mAb (3C10)  
 M176-A48 Anti-EEA1 mAb-Alexa Fluor<sup>®</sup> 488 (3C10)  
 M176-A59 Anti-EEA1 mAb-Alexa Fluor<sup>®</sup> 594 (3C10)  
 M176-A64 Anti-EEA1 mAb-Alexa Fluor<sup>®</sup> 647 (3C10)  
 PM062 Anti-EEA1 pAb  
 M175-3 Anti- $\alpha$ -Tubulin mAb (2F9)  
 M175-A48 Anti- $\alpha$ -Tubulin mAb-Alexa Fluor<sup>®</sup> 488 (2F9)  
 M175-A59 Anti- $\alpha$ -Tubulin mAb-Alexa Fluor<sup>®</sup> 594 (2F9)  
 M175-A64 Anti- $\alpha$ -Tubulin mAb-Alexa Fluor<sup>®</sup> 647 (2F9)  
 PM054 Anti- $\alpha$ -Tubulin pAb  
 PM054-7 Anti- $\alpha$ -Tubulin pAb-HRP-Direct  
 M178-3 Anti-Calnexin mAb (4F10)  
 M178-A48 Anti-Calnexin mAb-Alexa Fluor<sup>®</sup> 488 (4F10)  
 M178-A59 Anti-Calnexin mAb-Alexa Fluor<sup>®</sup> 594 (4F10)  
 M178-A64 Anti-Calnexin mAb-Alexa Fluor<sup>®</sup> 647 (4F10)  
 PM060 Anti-Calnexin pAb  
 M181-3 Anti-KDEL mAb (1D5)  
 PM059 Anti-KDEL pAb  
 M179-3 Anti-GM130 mAb (5G8)  
 M179-A48 Anti-GM130 mAb-Alexa Fluor<sup>®</sup> 488 (5G8)  
 M179-A59 Anti-GM130 mAb-Alexa Fluor<sup>®</sup> 594 (5G8)  
 M179-A64 Anti-GM130 mAb-Alexa Fluor<sup>®</sup> 647 (5G8)  
 PM061 Anti-GM130 pAb  
 PM063 Anti-COX4 pAb  
 PM064 Anti-Lamin B1 pAb  
  
 D115-3 Anti-CENP-A (Human) mAb (3-19)  
 PD030 Anti-CENP-C (Human) pAb  
 K0171-3 Anti-CENP-E (Human) mAb (1H12)  
 PD031 Anti-CENP-H (Human) pAb  
 PD032 Anti-CENP-I (hMis6) (Human) pAb  
 D282-3 Anti-CENP-K (ICEN37) (Human) mAb (46F1)  
 PD018 Anti-CENP-K (ICEN37) (Human) pAb  
 D283-3 Anti-CENP-L (ICEN33) (Human) mAb (27E10)  
 D284-3 Anti-CENP-M (ICEN39) (Human) mAb (23F6)  
 D285-3 Anti-CENP-N (ICEN32) (Human) mAb (22F4)  
 PD020 Anti-CENP-O (Chicken) pAb  
 D286-3 Anti-CENP-T (ICEN22) (Human) mAb (42F10)  
 PD019 Anti-CENP-50 (Human) pAb  
 D288-3 Anti-MgcRacGAP (Human) mAb (5G5)  
  
 PM036 Anti-LC3 pAb [WB, IP, IC, IHC, FCM]  
 M152-3 Anti-LC3 mAb (4E12) [WB, IP, IC, FCM, EM]  
 M186-3 Anti-LC3 mAb (8E10) [WB]  
 PD014 Anti-LC3 pAb [WB]  
 PD015 Anti-LC3 pAb [IC]  
 PM046 Anti-LC3 pAb [WB, IC]  
 M115-3 Anti-LC3 mAb (51-11) [WB]  
 PM040 Anti-Atg16L pAb  
 M150-3 Anti-Atg16L mAb (1F12)

WB: Western blotting  
 IP: Immunoprecipitation  
 IC: Immunocytochemistry  
 IHC: Immunohistochemistry  
 FCM: Flow cytometry  
 EM: Immuno-electron microscopy

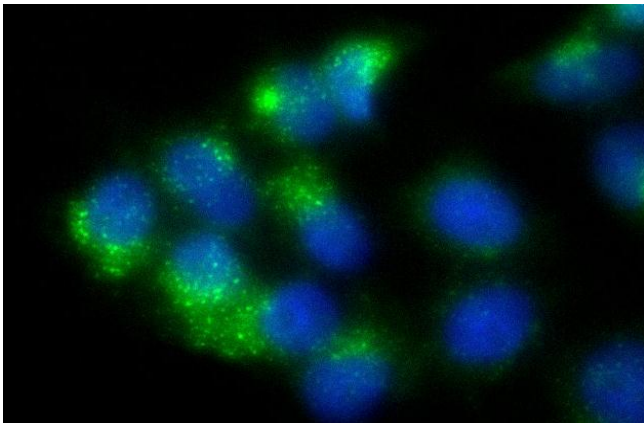
Other related antibodies and kits are also available.

Please visit our website at <http://ruo.mbl.co.jp/>

### **Immunocytochemistry**

- 1) Spread the cells in the nutrient condition on a glass slide, then incubate in a CO<sub>2</sub> incubator for one night.
- 2) Remove the culture supernatant by careful aspiration.
- 3) Fix the cells by immersing the slide in 4% paraformaldehyde (PFA)/PBS for 10 minutes at room temperature (20~25°C).
- 4) Prepare a wash container such as a 500 mL beaker with a magnetic stirrer. Then wash the fixed cells on the glass slide by soaking the slide with a plenty of PBS in the wash container for 5 minutes. Take care not to touch the cells. Repeat another wash twice more.
- 5) Immerse the slide in 0.2% Triton X-100/PBS for 10 minutes at room temperature.
- 6) Wash the slide 2 times with PBS.
- 7) Add 200 µL of the primary antibody diluted with 2% fetal calf serum (FCS)/PBS as suggested in the **APPLICATIONS** onto the cells and incubate for 30 minutes at room temperature. (Optimization of antibody concentration or incubation condition is recommended if necessary.)
- 8) Wash the slide 2 times with PBS.
- 9) Counter stain with DAPI for 5 minutes at room temperature.
- 10) Wash the slide 2 times with PBS.
- 11) Wipe excess liquid from slide but take care not to touch the cells. Never leave the cells to dry.
- 12) Promptly add mounting medium onto the slide, then put a cover slip on it.

(Positive control for Immunocytochemistry; HeLa)



#### ***Immunocytochemical detection of EEA1 in HeLa***

Green: M176-A48  
Blue: DAPI