

MONOCLONAL ANTIBODY

Alexa Fluor[®] 488 labeled Rat IgG2b isotype control

Code No.	Clone	Subclass	Quantity	Concentration
M090-A48	3G8	Rat IgG2b	100 µg	1 mg/mL

SOURCE: This antibody was purified from hybridoma (clone 3G8) supernatant using protein G agarose. This hybridoma was established by fusion of mouse myeloma cell P3U1 with rat lymph nodes immunized with KLH.

FORMULATION: 100 µg IgG in 100 µL volume of PBS containing 1% BSA and 0.09% NaN₃.

*Azide may react with copper or lead in plumbing system to form explosive metal azides. Therefore, always flush plenty of water when disposing materials containing azide into drain.

STORAGE: This antibody solution is stable for one year from the date of purchase when stored at 4°C.

REACTIVITY: No specific binding is detected on mouse splenocytes.

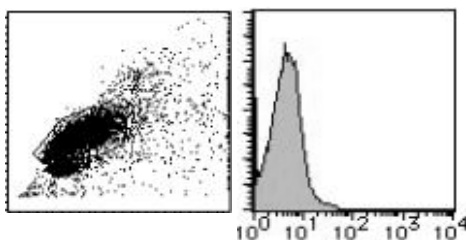
APPLICATION:

Flow cytometry: This antibody can be used as a negative isotypic control. The concentration will depend on the conditions.

Detailed procedure is provided in the following **PROTOCOL**.

INTENDED USE:

For Research Use Only. Not for use in diagnostic procedures.



Flow cytometric analysis of rat IgG2b reactivity on mouse splenocytes.

PROTOCOL:

Flow cytometric analysis for floating cells

We usually use Fisher tubes or equivalents as reaction tubes for all steps described below.

- 1) Wash the cells 3 times with washing buffer [PBS containing 2% fetal calf serum (FCS) and 0.1% NaN₃].
- 2) Resuspend the cells with washing buffer (6x10⁶ cells/mL).

- 3) Add 50 µL of the cell suspension into each tube, and centrifuge at 500 x g for 1 minute at room temperature (20~25°C). Remove supernatant by careful aspiration.
- 4) Add 10 µL of normal goat serum to the cell pellet after tapping. Mix well and incubate for 10 minutes at room temperature.
- 5) Add the isotype control antibody at the concentrations comparable to those of the specific antibody of interest. Mix well and incubate for 30 minutes at room temperature.
- 6) Add 1 mL of the washing buffer followed by centrifugation at 500 x g for 1 minute at room temperature. Remove supernatant by careful aspiration.
- 7) Resuspend the cells with 500 µL of the washing buffer and analyze by a flow cytometer.

RELATED PRODUCTS:

- M075-3 Mouse IgG1 isotype control (2E12)
- M075-4 FITC labeled Mouse IgG1 isotype control (2E12)
- M075-5 PE labeled Mouse IgG1 isotype control (2E12)
- M075-8 Agarose conjugated Mouse IgG1 isotype control (2E12)
- M075-A48 Alexa Fluor[®] 488 labeled Mouse IgG1 isotype control (2E12)
- M075-A64 Alexa Fluor[®] 647 labeled Mouse IgG1 isotype control (2E12)
- M076-3 Mouse IgG2a isotype control (6H3)
- M076-4 FITC labeled Mouse IgG2a isotype control (6H3)
- M076-5 PE labeled Mouse IgG2a isotype control (6H3)
- M076-A48 Alexa Fluor[®] 488 labeled Mouse IgG2a isotype control (6H3)
- M076-A64 Alexa Fluor[®] 647 labeled Mouse IgG2a isotype control (6H3)
- M077-3 Mouse IgG2b isotype control (3D12)
- M077-4 FITC labeled Mouse IgG2b isotype control (3D12)
- M077-5 PE labeled Mouse IgG2b isotype control (3D12)
- M077-A48 Alexa Fluor[®] 488 labeled Mouse IgG2b isotype control (3D12)
- M077-A64 Alexa Fluor[®] 647 labeled Mouse IgG2b isotype control (3D12)
- M078-3 Mouse IgG3 isotype control (6A3)
- M078-4 FITC labeled Mouse IgG3 isotype control (6A3)
- M079-3 Mouse IgM isotype control (7E10)
- M080-3 Rat IgG1 isotype control (1H5)
- M080-4 FITC labeled Rat IgG1 isotype control (1H5)
- M080-5 PE labeled Rat IgG1 isotype control (1H5)
- M080-A48 Alexa Fluor[®] 488 labeled Rat IgG1 isotype control (1H5)
- M081-3 Rat IgG2a isotype control (2H3)
- M081-4 FITC labeled Rat IgG2a isotype control (2H3)
- M081-5 PE labeled Rat IgG2a isotype control (2H3)
- M081-8 Agarose conjugated Rat IgG2a isotype control (2H3)
- M081-A48 Alexa Fluor[®] 488 labeled Rat IgG2a isotype control (2H3)
- M090-3 Rat IgG2b isotype control (3G8)
- M090-4 FITC labeled Rat IgG2b isotype control (3G8)
- M090-5 PE labeled Rat IgG2b isotype control (3G8)
- M090-A48 Alexa Fluor[®] 488 labeled Rat IgG2b isotype control (3G8)

M082-3 Rat IgG2c isotype control (6E12)
M082-4 FITC labeled Rat IgG2c isotype control (6E12)
PM035-8 Agarose conjugated Normal Rabbit IgG (polyclonal)

090918-1.1

LABEL LICENSES:

This product is provided under an agreement between LIFE TECHNOLOGIES Corporation, and Medical & Biological Laboratories Co., LTD, and the manufacture, use, sale or import of this product may be subject to one or more U.S. patents, pending applications, and corresponding non-U.S. equivalents, owned by or licensed to LIFE TECHNOLOGIES Corporation. For information on purchasing a license to this product for any other use, contact LIFE TECHNOLOGIES Corporation, Molecular Probes Detection Technologies, Business Development, 29851 Willow Creek Road, Eugene, OR 97402, USA, Tel: (541) 465-8300. Fax: (541) 335-0504.

Alexa Fluor[®] is a registered trademark of Molecular Probes, Inc.