

MONOCLONAL ANTIBODY

# PE labeled Rat IgG2b Isotype control

Code No.	Clone	Subclass	Quantity	Concentration
M090-5	3G8	Rat IgG2b	1 mL (50 tests)	10 µg/mL

**SOURCE:** This antibody was purified from hybridoma (clone 3G8) supernatant using protein G agarose. This hybridoma was established by fusion of mouse myeloma cell P3U1 with rat lymph nodes immunized with KLH.

**FORMULATION:** 50 tests in 1 mL volume of PBS containing 1% BSA and 0.09% NaN<sub>3</sub>.

\*Azide may react with copper or lead in plumbing system to form explosive metal azides. Therefore, always flush plenty of water when disposing materials containing azide into drain.

**STORAGE:** This antibody solution is stable for one year from the date of purchase when stored at 4°C.

**REACTIVITY:** No specific binding detected on mouse splenocyte.

**APPLICATION:**

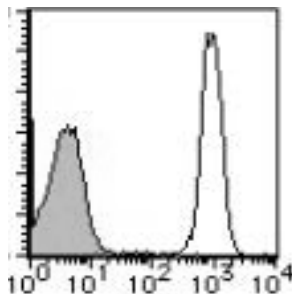
Flow cytometry: 20 µL (ready for use)

This antibody can be used as negative isotypic control. The concentration of antibody will depend on the conditions.

Detailed procedure is provided in the following **PROTOCOLS**.

**INTENDED USE:**

For Research Use Only. Not for use in diagnostic procedures.



**Flow cytometric analysis of PE labeled rat IgG2b on mouse splenocyte.** Shaded histogram indicates the reaction of M090-5 to the cells. Open histogram indicates the reaction of PE labeled mouse CD45 to the cells.

**PROTOCOLS:**

**Flow cytometric analysis for floating cells**

We usually use Fisher tubes or equivalents as reaction tubes for all steps described below.

- 1) Wash the cells 3 times with washing buffer [PBS containing 2% fetal calf serum (FCS) and 0.1% NaN<sub>3</sub>].
- 2) Resuspend the cells with washing buffer (6x10<sup>6</sup> cells/mL).
- 3) Add 50 µL of the cell suspension into each tube, and centrifuge at 500 x g for 1 minute at room temperature (20~25°C). Remove supernatant by careful aspiration.
- 4) Add 10 µL of normal goat serum to the cell pellet after tapping. Mix well and incubate for 5 minutes at room temperature.
- 5) Add 20 µL of the PE labeled Rat IgG2b Isotype control. Mix well and incubate for 20 minutes at room temperature.
- 6) Add 1 mL of the washing buffer followed by centrifugation at 500 x g for 1 minute at room temperature. Remove supernatant by careful aspiration.
- 7) Resuspend the cells with 500 µL of the washing buffer and analyze by a flow cytometer.

**RELATED PRODUCTS:**

- M075-3 Mouse IgG1 isotype control (2E12)
- M075-4 FITC labeled Mouse IgG1 isotype control (2E12)
- M075-5 PE labeled Mouse IgG1 isotype control (2E12)
- M075-8 Agarose conjugated Mouse IgG1 isotype control (2E12)
- M075-A48 Alexa Fluor<sup>®</sup> 488 labeled Mouse IgG1 isotype control (2E12)
- M075-A64 Alexa Fluor<sup>®</sup> 647 labeled Mouse IgG1 isotype control (2E12)
- M076-3 Mouse IgG2a isotype control (6H3)
- M076-4 FITC labeled Mouse IgG2a isotype control (6H3)
- M076-5 PE labeled Mouse IgG2a isotype control (6H3)
- M076-A48 Alexa Fluor<sup>®</sup> 488 labeled Mouse IgG2a isotype control (6H3)
- M076-A64 Alexa Fluor<sup>®</sup> 647 labeled Mouse IgG2a isotype control (6H3)
- M077-3 Mouse IgG2b isotype control (3D12)
- M077-4 FITC labeled Mouse IgG2b isotype control (3D12)
- M077-5 PE labeled Mouse IgG2b isotype control (3D12)
- M077-A48 Alexa Fluor<sup>®</sup> 488 labeled Mouse IgG2b isotype control (3D12)
- M077-A64 Alexa Fluor<sup>®</sup> 647 labeled Mouse IgG2b isotype control (3D12)
- M078-3 Mouse IgG3 isotype control (6A3)
- M078-4 FITC labeled Mouse IgG3 isotype control (6A3)
- M079-3 Mouse IgM isotype control (7E10)
- M080-3 Rat IgG1 isotype control (1H5)
- M080-4 FITC labeled Rat IgG1 isotype control (1H5)
- M080-5 PE labeled Rat IgG1 isotype control (1H5)
- M080-A48 Alexa Fluor<sup>®</sup> 488 labeled Rat IgG1 isotype control (1H5)
- M081-3 Rat IgG2a isotype control (2H3)
- M081-4 FITC labeled Rat IgG2a isotype control (2H3)
- M081-5 PE labeled Rat IgG2a isotype control (2H3)

M081-8 Agarose conjugated Rat IgG2a isotype control (2H3)  
M081-A48 Alexa Fluor<sup>®</sup> 488 labeled Rat IgG2a isotype control (2H3)  
M090-3 Rat IgG2b isotype control (3G8)  
M090-4 FITC labeled Rat IgG2b isotype control (3G8)  
M090-5 PE labeled Rat IgG2b isotype control (3G8)  
M090-A48 Alexa Fluor<sup>®</sup> 488 labeled Rat IgG2b isotype control (3G8)  
M082-3 Rat IgG2c isotype control (6E12)  
M082-4 FITC labeled Rat IgG2c isotype control (6E12)  
PM035-8 Agarose conjugated Normal Rabbit IgG (polyclonal)