

MONOCLONAL ANTIBODY

Alexa Fluor[®] 647 labeled Rat IgG1 isotype control

Code No.	Clone	Subclass	Quantity	Concentration
M080-A64	1H5	Rat IgG1	100 µL	1 mg/mL

SOURCE: This antibody was purified from hybridoma (clone 1H5) supernatant using protein G agarose. This hybridoma was established by fusion of mouse myeloma cell P3U1 with rat lymph nodes immunized with KLH.

FORMULATION: 100 µg IgG in 100 µL volume of PBS containing 1% BSA and 0.09% NaN₃.

*Azide may react with copper or lead in plumbing system to form explosive metal azides. Therefore, always flush plenty of water when disposing materials containing azide into drain.

STORAGE: This antibody solution is stable for one year from the date of purchase when stored at 4°C.

REACTIVITY: No specific binding is detected on mouse splenocytes.

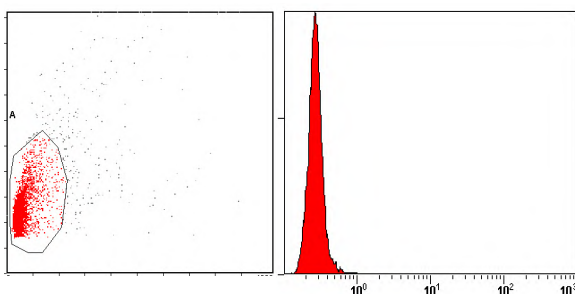
APPLICATION:

Flow cytometry: This antibody can be used as a negative isotypic control. The concentration will depend on the conditions.

Detailed procedure is provided in the following **PROTOCOL**.

INTENDED USE:

For Research Use Only. Not for use in diagnostic procedures.



Flow cytometric analysis of rat IgG1 reactivity of mouse splenocytes.

PROTOCOL:

Flow cytometric analysis for floating cells

We usually use Fisher tubes or equivalents as reaction tubes for all steps described below.

1) Wash the cells 3 times with washing buffer [PBS containing 2% fetal calf serum (FCS) and 0.1% NaN₃].

- 2) Resuspend the cells with washing buffer (6x10⁶ cells/mL).
- 3) Add 50 µL of the cell suspension into each tube, and centrifuge at 500 x g for 1 minute at room temperature (20~25°C). Remove supernatant by careful aspiration.
- 4) Add 10 µL of normal goat serum to the cell pellet after tapping. Mix well and incubate for 10 minutes at room temperature.
- 5) Add the isotype control antibody at the concentrations comparable to those of the specific antibody of interest. Mix well and incubate for 30 minutes at room temperature.
- 6) Add 1 mL of the washing buffer followed by centrifugation at 500 x g for 1 minute at room temperature. Remove supernatant by careful aspiration.
- 7) Resuspend the cells with 500 µL of the washing buffer and analyze by a flow cytometer.

RELATED PRODUCTS:

M075-3	Mouse IgG1 isotype control (2E12)
M075-4	Mouse IgG1 isotype control-FITC (2E12)
M075-5	Mouse IgG1 isotype control-PE (2E12)
M075-8	Mouse IgG1 isotype control-Agarose (2E12)
M075-A48	Mouse IgG1 isotype control-Alexa Fluor [®] 488 (2E12)
M075-A64	Mouse IgG1 isotype control-Alexa Fluor [®] 647 (2E12)
M076-3	Mouse IgG2a isotype control (6H3)
M076-4	Mouse IgG2a isotype control-FITC (6H3)
M076-5	Mouse IgG2a isotype control-PE (6H3)
M076-A48	Mouse IgG2a isotype control-Alexa Fluor [®] 488 (6H3)
M076-A64	Mouse IgG2a isotype control-Alexa Fluor [®] 647 (6H3)
M077-3	Mouse IgG2b isotype control (3D12)
M077-4	Mouse IgG2b isotype control-FITC (3D12)
M077-5	Mouse IgG2b isotype control-PE (3D12)
M077-A48	Mouse IgG2b isotype control-Alexa Fluor [®] 488 (3D12)
M077-A64	Mouse IgG2b isotype control-Alexa Fluor [®] 647 (3D12)
M078-3	Mouse IgG3 isotype control (6A3)
M078-4	Mouse IgG3 isotype control-FITC (6A3)
M079-3	Mouse IgM isotype control (7E10)
M080-3	Rat IgG1 isotype control (1H5)
M080-4	Rat IgG1 isotype control-FITC (1H5)
M080-5	Rat IgG1 isotype control-PE (1H5)
M080-A48	Rat IgG1 isotype control-Alexa Fluor [®] 488 (1H5)
M080-A64	Rat IgG1 isotype control-Alexa Fluor [®] 647 (1H5)
M081-3	Rat IgG2a isotype control (2H3)
M081-4	Rat IgG2a isotype control-FITC (2H3)
M081-5	Rat IgG2a isotype control-PE (2H3)
M081-8	Rat IgG2a isotype control-Agarose (2H3)
M081-A48	Rat IgG2a isotype control-Alexa Fluor [®] 488 (2H3)
M081-A64	Rat IgG2a isotype control-Alexa Fluor [®] 647 (2H3)
M090-3	Rat IgG2b isotype control (3G8)
M090-4	Rat IgG2b isotype control-FITC (3G8)

M090-5	Rat IgG2b isotype control-PE (3G8)
M090-A48	Rat IgG2b isotype control-Alexa Fluor [®] 488 (3G8)
M090-A64	Rat IgG2b isotype control-Alexa Fluor [®] 647 (3G8)
M082-3	Rat IgG2c isotype control (6E12)
M082-4	Rat IgG2c isotype control-FITC (6E12)
PM035-8	Normal Rabbit IgG-Agarose (polyclonal)

250901-2

LABEL LICENSES:

This product is provided under an agreement between LIFE TECHNOLOGIES Corporation, and Medical & Biological Laboratories Co., LTD, and the manufacture, use, sale or import of this product may be subject to one or more U.S. patents, pending applications, and corresponding non-U.S. equivalents, owned by or licensed to LIFE TECHNOLOGIES Corporation. For information on purchasing a license to this product for any other use, contact LIFE TECHNOLOGIES Corporation, Molecular Probes Detection Technologies, Business Development, 29851 Willow Creek Road, Eugene, OR 97402, USA, Tel: (541) 465-8300. Fax: (541) 335-0504.

Alexa Fluor[®] is a registered trademark of Molecular Probes, Inc.