

MONOCLONAL ANTIBODY

# PE labeled Rat IgG1 Isotype control

Code No.	Clone	Subclass	Quantity	Concentration
M080-5	1H5	Rat IgG1	1 mL (50 tests)	10 µg/mL

**SOURCE:** This antibody was purified from hybridoma (clone 1H5) supernatant using protein G agarose. This hybridoma was established by fusion of mouse myeloma cell P3U1 with rat lymph nodes immunized with KLH.

**FORMULATION:** 50 tests in 1 mL volume of PBS containing 1% BSA and 0.09% NaN<sub>3</sub>.

\*Azide may react with copper or lead in plumbing system to form explosive metal azides. Therefore, always flush plenty of water when disposing materials containing azide into drain.

**STORAGE:** This antibody solution is stable for one year from the date of purchase when stored at 4°C.

**REACTIVITY:** No specific binding detected on mouse splenocyte.

**APPLICATION:**

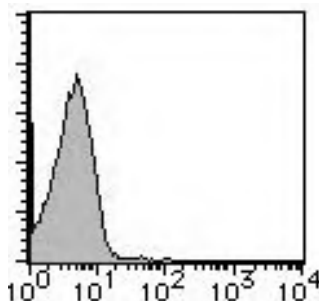
Flow cytometry: 20 µL (ready for use)

This antibody can be used as negative isotypic control. The concentration of antibody will depend on condition.

Detailed procedure is provided in the following **PROTOCOLS.**

**INTENDED USE:**

For Research Use Only. Not for use in diagnostic procedures.



**Flow cytometric analysis of PE labeled rat IgG1 on mouse splenocyte using M080-5.**

**PROTOCOLS:**

**Flow cytometric analysis for floating cells**

We usually use Fisher tubes or equivalents as reaction tubes for all steps described below.

- 1) Wash the cells 3 times with washing buffer [PBS containing 2% fetal calf serum (FCS) and 0.1% NaN<sub>3</sub>].
- 2) Resuspend the cells with washing buffer (5x10<sup>6</sup> cells/mL).
- 3) Add 50 µL of the cell suspension into each tube, and centrifuge at 500 x g for 1 minute at room temperature (20~25°C). Remove supernatant by careful aspiration.
- 4) Add 10 µL of normal goat serum containing 1 mg/mL normal human IgG and 0.1% NaN<sub>3</sub> to the cell pellet after tapping. Mix well and incubate for 5 minutes at room temperature.
- 5) Add 20 µL of the PE labeled Rat IgG1 Isotype control. Mix well and incubate for 20 minutes at room temperature.
- 6) Add 1 mL of the washing buffer followed by centrifugation at 500 x g for 1 minute at room temperature. Remove supernatant by careful aspiration.
- 7) Resuspend the cells with 500 µL of the washing buffer and analyze by a flow cytometer.

**Flow cytometric analysis for whole blood cells**

We usually use Fisher tubes or equivalents as reaction tubes for all steps described below.

- 1) Add 20 µL of PE labeled Rat IgG1 Isotype control into each tube.
- 2) Add 50 µL of whole blood into each tube. Mix well, and incubate for 30 minutes at room temperature (20~25 °C).
- 3) Add 1 mL of washing buffer [PBS containing 2% fetal calf serum (FCS) and 0.1% NaN<sub>3</sub>] followed by centrifugation at 500 x g for 1 minute at room temperature. Remove supernatant by careful aspiration.
- 4) Lyse with OptiLyse C (for analysis on Beckman Coulter instruments) or OptiLyse B (for analysis on BD instruments), using the procedure recommended in the respective package inserts.
- 5) Add 1 mL of H<sub>2</sub>O to each tube and incubate for 10 minutes at room temperature.
- 6) Centrifuge at 500 x g for 1 minute at room temperature. Remove supernatant by careful aspiration.
- 7) Add 1 mL of washing buffer followed by centrifugation at 500 x g for 1 minute at room temperature. Remove supernatant by careful aspiration.
- 8) Resuspend the cells with 500 µL of the washing buffer and analyze by a flow cytometer.

**RELATED PRODUCTS:**

- M075-3 Mouse IgG1 Isotype control (2E12)
- M075-4 FITC labeled Mouse IgG1 Isotype control (2E12)
- M075-5 PE labeled Mouse IgG1 isotype control (2E12)
- M075-8 Agarose conjugated Mouse IgG1 Isotype control (2E12)
- M076-3 Mouse IgG2a Isotype control (6H3)
- M076-4 FITC labeled Mouse IgG2a Isotype control (6H3)
- M076-5 PE labeled Mouse IgG2a isotype control (6H3)
- M077-3 Mouse IgG2b Isotype control (3D12)
- M077-4 FITC labeled Mouse IgG2b Isotype control (3D12)
- M077-5 PE labeled Mouse IgG2b isotype control (3D12)
- M078-3 Mouse IgG3 Isotype control (6A3)
- M078-4 FITC labeled Mouse IgG3 Isotype control (6A3)
- M079-3 Mouse IgM Isotype control (7E10)
- M080-3 Rat IgG1 Isotype control (1H5)
- M080-4 FITC labeled Rat IgG1 Isotype control (1H5)
- M080-5 PE labeled Rat IgG1 Isotype control (1H5)
- M081-3 Rat IgG2a Isotype control (2H3)
- M081-4 FITC labeled Rat IgG2a Isotype control (2H3)
- M081-5 PE labeled Rat IgG2a Isotype control (2H3)
- M081-8 Agarose conjugated Rat IgG2a Isotype control (2H3)
- M090-3 Rat IgG2b Isotype control (3G8)
- M090-4 FITC labeled Rat IgG2b Isotype control (3G8)
- M082-3 Rat IgG2c Isotype control (6E12)
- M082-4 FITC labeled Rat IgG2c Isotype control (6E12)
- PM035-8 Agarose conjugated Normal Rabbit IgG (polyclonal)