

Mouse IgG2a (isotype control)-Biotin

| | |
|--------------------|---|
| CODE No. | M076-6 |
| CLONALITY | Monoclonal |
| CLONE | 6H3 |
| ISOTYPE | Mouse IgG2a κ |
| QUANTITY | 50 μ L, 1 mg/mL |
| SOURCE | Purified IgG from hybridoma supernatant |
| IMMUNOGEN | KLH |
| REACTIVITY | No specific binding is detected on Flow cytometry. |
| FORMULATION | PBS containing 1% BSA and 0.1% ProClin 950 |
| STORAGE | This antibody solution is stable for one year from the date of purchase when stored at 4°C. |

APPLICATION-CONFIRMED

Flow cytometry

This antibody can be used as a negative control.
The concentration will depend on the conditions.

For more information, please visit our web site <https://ruo.mbl.co.jp/>

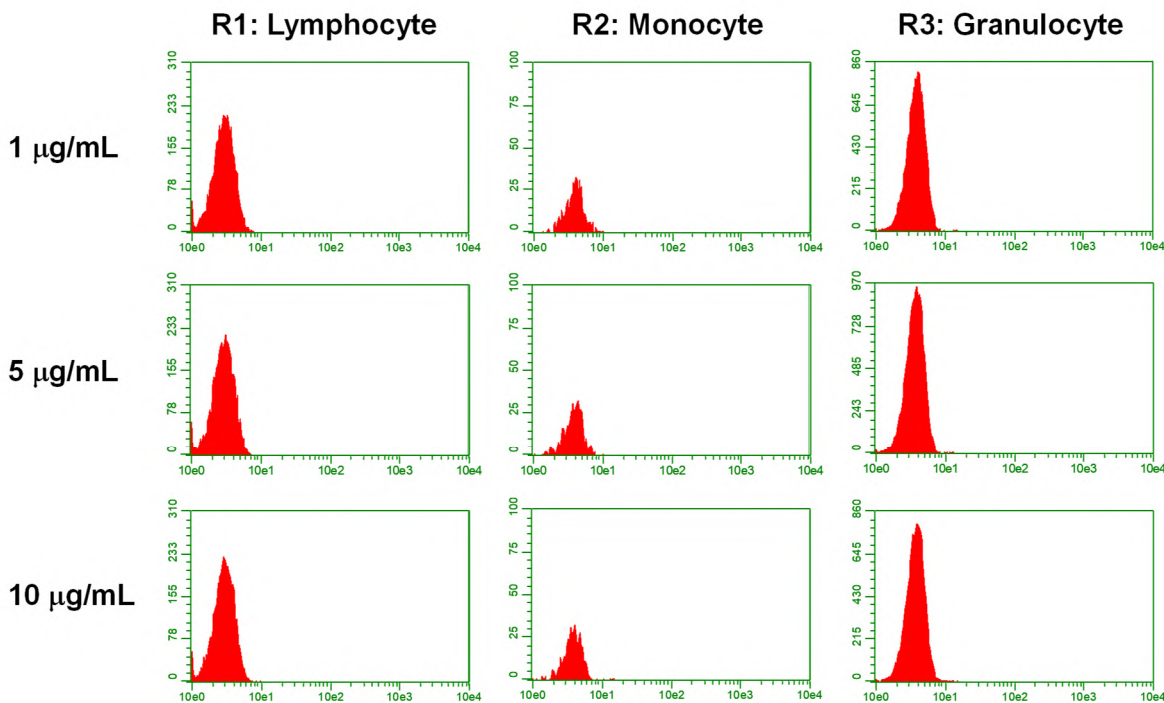
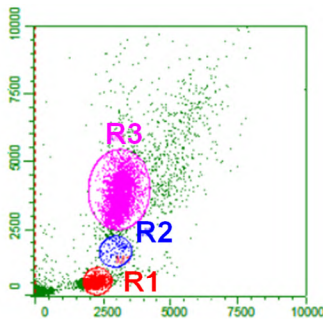
RELATED PRODUCTS

Please visit our web site <https://ruo.mbl.co.jp/>

The descriptions of the following protocols are examples. Each user should determine the appropriate condition.

Flow cytometric analysis for whole blood cells

- 1) Dispense 100 μ L of whole blood into each tube.
- 2) Add 50 μ L of 1, 5 or 10 μ g/mL Mouse IgG2a (isotype control)-Biotin (M076-6) diluted with washing buffer [PBS containing 2% fetal calf serum (FCS)]. Mix well and incubate for 20 min. at room temperature.
- 3) Wash the cells 1 time with 1 mL of washing buffer.
- 4) Add FITC conjugated Streptavidin diluted with washing buffer. Mix well and incubate for 20 min. at room temperature.
- 5) Wash the cells 1 time with 1 mL of washing buffer.
- 6) Add 100 μ L of OptiLyse B (for analysis on BD instruments, Beckman Coulter; code no. IM-1400). Mix well and incubate for 10 min. at room temperature.
- 7) Add 1 mL of distilled water to each tube and incubate for 10 min. at room temperature.
- 8) Centrifuge at 500 x g for 1 min. at room temperature. Remove supernatant by careful aspiration.
- 9) Resuspend the cells with 500 μ L of the washing buffer and analyze by a flow cytometer.



Flow cytometric analysis of Mouse IgG2a on human PBMC

Antibody: Mouse IgG2a (isotype control)-Biotin (M076-6)