

**For Research Use Only.  
Not for use in diagnostic procedures.**



*Smart-IP Series*

# Mouse IgG2a (isotype control) -Magnetic Beads

<b>CODE No.</b>	M076-11
<b>CLONALITY</b>	Monoclonal
<b>CLONE</b>	6H3
<b>ISOTYPE</b>	Mouse IgG2a $\kappa$
<b>QUANTITY</b>	20 tests (Slurry: 1 mL)
<b>SOURCE</b>	Purified IgG from hybridoma supernatant
<b>IMMUNOGEN</b>	KLH
<b>REACTIVITY</b>	No specific binding is detected on immunoprecipitation.
<b>FORMURATION</b>	Covalently antibody conjugated 10 mg magnetic beads in 1 mL PBS/0.1% BSA/0.1% ProClin 150
<b>STORAGE</b>	This beads suspension is stable for one year from the date of purchase when stored at 4°C.
<b>APPLICATION-CONFIRMED</b>	
<u>Immunoprecipitation</u>	50 $\mu$ L of beads slurry/sample

For more information, please visit our web site <http://ruo.mbl.co.jp/>



## **RELATED PRODUCTS**

### Smart-IP series

3190	Magnetic Rack
M075-11	Mouse IgG1 (isotype control)-Magnetic Beads (2E12)
M076-11	Mouse IgG2a (isotype control)-Magnetic Beads (6H3)
M077-11	Mouse IgG2b (isotype control)-Magnetic Beads (3D12)
M081-11	Rat IgG2a (isotype control)-Magnetic Beads (2H3)
M180-11	Anti-HA-tag mAb-Magnetic Beads (TANA2)
M132-11	Anti-HA-tag mAb-Magnetic Beads (5D8)
M185-11	Anti-DDDDK-tag mAb-Magnetic Beads (FLA-1)
M047-11	Anti-Myc-tag mAb-Magnetic Beads (PL14)
D291-11	Anti-His-tag mAb-Magnetic Beads (OGHis)
D153-11	Anti-GFP mAb-Magnetic Beads (RQ2)
M165-11	Anti-RFP mAb-Magnetic Beads (3G5)
M198-9	Anti-E-tag mAb-Magnetic beads (21D11)
M167-11	Anti-V5-tag mAb-Magnetic Beads (1H6)
D058-9	Anti-Multi Ubiquitin mAb-Magnetic beads (FK2)
M180-10	Anti-HA-tag mAb-Magnetic Agarose (TANA2)
M132-10	Anti-HA-tag mAb-Magnetic Agarose (5D8)
M185-10	Anti-DDDDK-tag mAb-Magnetic Agarose (FLA-1)
M047-10	Anti-Myc-tag mAb-Magnetic Agarose (PL14)
D291-10	Anti-His-tag mAb-Magnetic Agarose (OGHis)
D153-10	Anti-GFP mAb-Magnetic Agarose (RQ2)
M165-10	Anti-RFP mAb-Magnetic Agarose (3G5)
M167-10	Anti-V5-tag mAb-Magnetic Agarose (1H6)
M198-10	Anti-E-tag mAb-Magnetic Agarose (21D11)
M201-10	Anti-Phosphotyrosine mAb-Magnetic Agarose (PT4)

### Functional grade antibodies

M075-3M2	Mouse IgG1 (isotype control) (2E12)
M076-3M2	Mouse IgG2a (isotype control) (6H3)
M077-3M2	Mouse IgG2b (isotype control) (3D12)
M078-3M2	Mouse IgG3 (isotype control) (6A3)
M079-3M2	Mouse IgM (isotype control) (7E10)
M080-3M2	Rat IgG1 (isotype control) (1H5)
M081-3M2	Rat IgG2a (isotype control) (2H3)
M090-3M2	Rat IgG2b (isotype control) (3G8)

### Purified antibodies

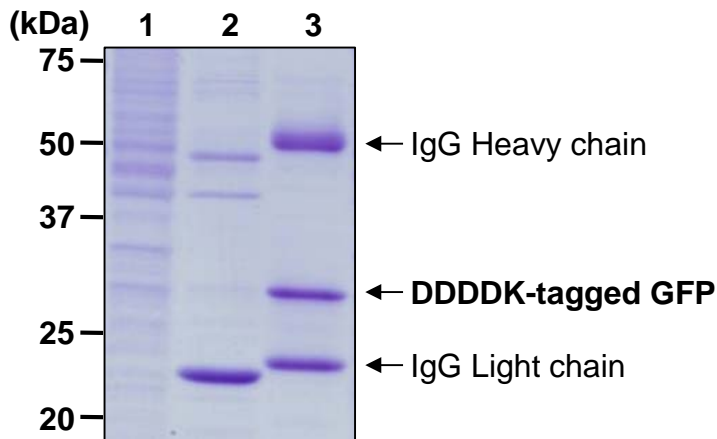
M075-3	Mouse IgG1 (isotype control) (2E12)
M075-4	Mouse IgG1 (isotype control)-FITC (2E12)
M075-5	Mouse IgG1 (isotype control)-PE (2E12)
M075-A48	Mouse IgG1 (isotype control)-Alexa Fluor <sup>®</sup> 488 (2E12)
M075-A64	Mouse IgG1 (isotype control)-Alexa Fluor <sup>®</sup> 647 (2E12)
M075-8	Mouse IgG1 (isotype control)-Agarose (2E12)
M076-3	Mouse IgG2a (isotype control) (6H3)
M076-4	Mouse IgG2a (isotype control)-FITC (6H3)
M076-5	Mouse IgG2a (isotype control)-PE (6H3)
M076-A48	Mouse IgG2a (isotype control)-Alexa Fluor <sup>®</sup> 488 (6H3)
M076-A64	Mouse IgG2a (isotype control)-Alexa Fluor <sup>®</sup> 647 (6H3)
M077-3	Mouse IgG2b (isotype control) (3D12)
M077-4	Mouse IgG2b (isotype control)-FITC (3D12)
M077-5	Mouse IgG2b (isotype control)-PE (3D12)
M077-A48	Mouse IgG2b (isotype control)-Alexa Fluor <sup>®</sup> 488 (3D12)
M077-A64	Mouse IgG2b (isotype control)-Alexa Fluor <sup>®</sup> 647 (3D12)
M078-3	Mouse IgG3 (isotype control) (6A3)
M078-4	Mouse IgG3 (isotype control)-FITC (6A3)
M079-3	Mouse IgM (isotype control) (7E10)
M080-3	Rat IgG1 (isotype control) (1H5)
M080-4	Rat IgG1 (isotype control)-FITC (1H5)

M080-5	Rat IgG1 (isotype control)-PE (1H5)
M080-A48	Rat IgG1 (isotype control)-Alexa Fluor <sup>®</sup> 488 (1H5)
M080-A64	Rat IgG1 (isotype control)-Alexa Fluor <sup>®</sup> 647 (1H5)
M081-3	Rat IgG2a (isotype control) (2H3)
M081-4	Rat IgG2a (isotype control)-FITC (2H3)
M081-5	Rat IgG2a (isotype control)-PE (2H3)
M081-A48	Rat IgG2a (isotype control)-Alexa Fluor <sup>®</sup> 488 (2H3)
M081-A64	Rat IgG2a (isotype control)-Alexa Fluor <sup>®</sup> 647 (2H3)
M081-8	Rat IgG2a (isotype control)-Agarose (2H3)
M082-3	Rat IgG2c (isotype control) (6E12)
M082-4	Rat IgG2c (isotype control)-FITC (6E12)
M090-3	Rat IgG2b (isotype control) (3G8)
M090-4	Rat IgG2b (isotype control)-FITC (3G8)
M090-5	Rat IgG2b (isotype control)-PE (3G8)
M090-A48	Rat IgG2b (isotype control)-Alexa Fluor <sup>®</sup> 488 (3G8)
M090-A64	Rat IgG2b (isotype control)-Alexa Fluor <sup>®</sup> 647 (3G8)
PM035	Normal Rabbit IgG (polyclonal)
PM035-8	Normal Rabbit IgG-Agarose (polyclonal)
PM067	Normal Guinea Pig IgG (polyclonal)
M189-3	Syrian Hamster IgG (isotype control)
M199-3	Armenian Hamster IgG (isotype control)
PM084	Normal Chicken IgY (polyclonal)
PM084-4	Normal Chicken IgY-FITC (polyclonal)

Other related antibodies and kits are also available.  
Please visit our website at <http://ruo.mbl.co.jp/>

### **Immunoprecipitation**

- 1) Wash  $2 \times 10^6$  cells 3 times with PBS and suspend them in 500  $\mu$ L of cold Extraction buffer [50 mM Tris-HCl (pH 7.5), 150 mM NaCl, 1% NP-40].
- 2) Centrifuge the tube at 12,000 x g for 5 min. at 4°C and transfer the supernatant to another tube.
- 3) Add magnetic beads as suggested in the **APPLICATION** into 500  $\mu$ L of the cell lysate. Mix well and incubate with gentle agitation for 30 min. at 4°C.
- 4) Place the tube on the magnetic rack (MBL; code no. 3190) for a few seconds.
- 5) Remove the supernatant.
- 6) Wash the beads 4 times with 1 mL of cold Wash buffer [50 mM Tris-HCl (pH 7.5), 150 mM NaCl, 0.05% NP-40] (place the tube on the magnetic rack for a few seconds).
- 7) Resuspend the magnetic beads in 20  $\mu$ L of Laemmli's sample buffer, boil for 3 min., and place the tube on the magnetic rack for a few seconds.
- 8) Load 20  $\mu$ L of the sample per lane in a 1-mm-thick SDS-polyacrylamide gel and carry out electrophoresis.
- 9) Visualize the protein bands by CBB staining.



### ***Immunoprecipitation of DDDDK-tagged protein***

Sample: HEK293T cell lysate from  $2 \times 10^6$  cells + DDDDK-tagged GFP 10  $\mu$ g

Lane 1: Input (10  $\mu$ L/lane)

Lane 2: Post-IP beads of Mouse IgG2a (isotype control)-Magnetic Beads (M076-11)

Lane 3: Post-IP beads of Anti-DDDDK-tag mAb-Magnetic Beads (M185-11)