

MONOCLONAL ANTIBODY

Anti-HLA-A24 (Human) mAb-Alexa Fluor® 647

Code No.	Clone	Subclass	Quantity	Concentration
K0208-A64	17A10	Mouse IgG2b	100 µL	1 mg/mL

BACKGROUND: HLA (human leukocyte antigen)-A24 is a class I MHC antigen. HLA-A24 is the most frequent HLA class I molecule in Asian populations, present in approximately ~70% of the Japanese population. HLA-A24 is also found in approximately 35% of the Indian population and 19% of Caucasians. HLA antigens may play a role in genetic susceptibility to disease.

SOURCE: This antibody was purified from hybridoma (clone 17A10) supernatant using protein A agarose. This hybridoma was established by fusion of mouse myeloma cell Sp2/0 with C57BL/6 Tg mouse splenocyte immunized with the recombinant human HLA-A24.

FORMULATION: 100 µg IgG in 100 µL volume of PBS containing 1% BSA and 0.1% ProClin 150.

STORAGE: This antibody solution is stable for one year from the date of purchase when stored at 4°C.

REACTIVITY: This antibody reacts with HLA-A24 on Flow cytometry.

Note: It was reported that this clone 17A10 cross-reacted to HLA-B27 and some indeterminate HLA. Although HLA-B27 population is so small in Japanese, about 20% of tested population in our laboratories reacted to this antibody as false-positive. To ensure your experiment, you should confirm HLA genotyping.

APPLICATION:

Flow cytometry: 10 µg/mL (final concentration)
*Please refer to the data sheet (MBL, code no. K0208-3) for other applications.

Detailed procedure is provided in the following **PROTOCOLS**.

SPECIES CROSS REACTIVITY:

Species	Human	Mouse	Rat
Cell	LCL721	Not tested	Not tested
Reactivity on FCM	+		

INTENDED USE:

For Research Use Only. Not for use in diagnostic procedures.

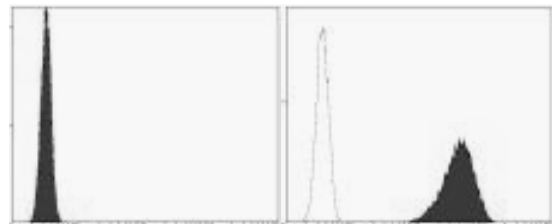
RELATED PRODUCTS:

Please visit our website at <https://ruo.mbl.co.jp/>.

REFERENCES:

- 1) Kato, T., *et al.*, *Oncotarget* **9**, 11009-11019 (2018)
- 2) Ichikawa, A., *et al.*, *Oncol. Lett.* **13**, 4611-4618 (2017)
- 3) Harada, N., *et al.*, *J. Immunol.* **198**, 516-527 (2017)
- 4) Kozako, T., *et al.*, *J. Immunol.* **177**, 5718-5726 (2006)
- 5) Lutz, C. T., *et al.*, *J. Immunol.* **153**, 4099-4110 (1994)
- 6) Tahara, T., *et al.*, *Immunogenetics* **32**, 351-360 (1990)

Clone 17A10 is used in these references.



Flow cytometric analysis of HLA-A24 expression on Jurkat (left) and LCL721 (right). Open histogram indicates the reaction of isotypic control to the cells. Shaded histograms indicate the reaction of K0208-A64 to the cells.

PROTOCOLS:

Flow cytometric analysis for floating cells

We usually use Fisher tubes or equivalents as reaction tubes for all steps described below.

- 1) Wash the cells 3 times with washing buffer [PBS containing 2% fetal calf serum (FCS) and 0.09% NaN₃].
*Azide may react with copper or lead in plumbing system to form explosive metal azides. Therefore, always flush plenty of water when disposing materials containing azide into drain.
- 2) Resuspend the cells with washing buffer (5 x 10⁶ cells/mL).
- 3) Add 50 µL of the cell suspension into each tube, and centrifuge at 500 x g for 1 minute at room temperature (20~25°C). Remove supernatant by careful aspiration.
- 4) Add 20 µL of Clear Back (human Fc receptor blocking reagent, MBL, code no. MTG-001) to the cell pellet after tapping. Mix well and incubate for 10 minutes at room temperature.

- 5) Add 20 μL of the primary antibody at the concentration of as suggested in the **APPLICATION** diluted with the washing buffer. Mix well and incubate for 15 minutes at room temperature.
- 6) Add 1 mL of the washing buffer followed by centrifugation at 500 x g for 1 minute at room temperature. Remove supernatant by careful aspiration.
- 7) Resuspend the cells with 500 μL of the washing buffer and analyze by a flow cytometer.

(Positive control for Flow cytometry; LCL721)

Flow cytometric analysis for whole blood cells

We usually use Fisher tubes or equivalents as reaction tubes for all steps described below.

- 1) Add 50 μL of the primary antibody at the concentration of as suggested in the **APPLICATION** diluted with the washing buffer [PBS containing 2% fetal calf serum (FCS) and 0.09% NaN_3] into each tube.
- 2) Add 50 μL of whole blood into each tube. Mix well, and incubate for 30 minutes at room temperature (20~25°C).
- 3) Add 1 mL of washing buffer followed by centrifugation at 500 x g for 1 minute at room temperature. Remove supernatant by careful aspiration.
- 4) Lyse with OptiLyse C (for analysis on Beckman Coulter instruments) or OptiLyse B (for analysis on BD instruments), using the procedure recommended in the respective package inserts.
- 5) Add 1 mL of H_2O to each tube and incubate for 10 minutes at room temperature.
- 6) Centrifuge at 500 x g for 1 minute at room temperature. Remove supernatant by careful aspiration.
- 7) Add 1 mL of washing buffer followed by centrifugation at 500 x g for 1 minute at room temperature. Remove supernatant by careful aspiration.
- 8) Resuspend the cells with 500 μL of the washing buffer and analyze by a flow cytometer.

200512-5

LABEL LICENSES:

This product is provided under an agreement between LIFE TECHNOLOGIES Corporation, and Medical & Biological Laboratories Co., LTD, and the manufacture, use, sale or import of this product may be subject to one or more U.S. patents, pending applications, and corresponding non-U.S. equivalents, owned by or licensed to LIFE TECHNOLOGIES Corporation. For information on purchasing a license to this product for any other use, contact LIFE TECHNOLOGIES Corporation, Molecular Probes Detection Technologies, Business Development, 29851 Willow Creek Road, Eugene, OR 97402, USA, Tel: (541) 465-8300. Fax: (541) 335-0504.

Alexa Fluor[®] is a registered trademark of Molecular Probes, Inc.