

**For Research Use Only.**  
**Not for use in diagnostic procedures.**



# Anti-Stabilin-2 (Mouse) mAb -Alexa Fluor™ 488

**CODE No.** D317-A48  
**CLONALITY** Monoclonal  
**CLONE** #34-2  
**ISOTYPE** Rat IgG2a  
**QUANTITY** 100 µL, 1 mg/mL

**SOURCE** Purified IgG from hybridoma supernatant  
**IMMUNOGEN** Ba/F3 transfectant, 1,144 aa-2,497 aa  
**FORMULATION** PBS containing 1% BSA and 0.09% NaN<sub>3</sub>.

\*Azide may react with copper or lead in plumbing system to form explosive metal azides. Therefore, always flush plenty of water when disposing materials containing azide into drain.

**STORAGE** This antibody solution is stable for one year from the date of purchase when stored at 4°C.

## APPLICATION-CONFIRMED

Flow cytometry 5 µg/mL

## APPLICATION-REPORTED

Immunocytochemistry Reference 1)

## SPECIES CROSS REACTIVITY on FCM

Species	Human	Mouse	Rat	Hamster
Cell	Not tested	Transfectant	Not tested	Not tested
Reactivity		+		

**Entrez Gene ID** 192188 (Mouse)

## REFERENCES

- 1) Meyer, J., *et al.*, *Exp. Cell Res.* **349**, 291-301 (2016) [IC]
- 2) Hirose, Y., *et al.*, *PNAS.* **109**, 4263-4268 (2012)
- 3) Nonaka, H., *et al.*, *Biochem. Biophys. Res. Commun.* **375**, 256-260 (2008)
- 4) Nonaka, H., *et al.*, *Dev. Dyn.* **236**, 2258-2267 (2007)

For more information, please visit our website at <https://ruo.mbl.co.jp/>.

## LABEL LICENSES:

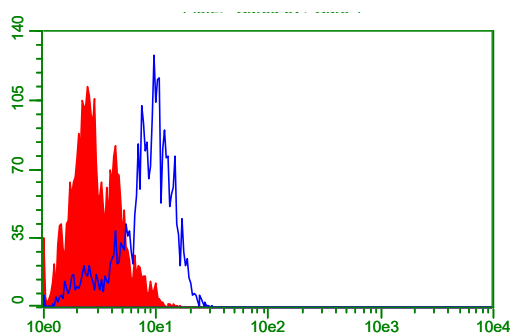
This product is provided under an agreement between LIFE TECHNOLOGIES Corporation, and Medical & Biological Laboratories Co., LTD. Alexa Fluor™ is a trademark of LIFE TECHNOLOGIES Corporation.

The descriptions of the following protocols are examples. Each user should determine the appropriate condition.

### **Flow cytometric analysis**

- 1) Wash the cells ( $5 \times 10^5$  cells/sample) once with 1 mL of washing buffer [PBS containing 2% fetal calf serum (FCS)].
- 2) Add 20  $\mu$ L of Clear Back (human Fc receptor blocking reagent, MBL, code no. MTG-001) to the cell pellet after tapping. Mix well and incubate for 5 min. at room temperature.
- 3) Add 40  $\mu$ L of the primary antibody at the concentration as suggested in the **APPLICATION** diluted in the washing buffer. Mix well and incubate for 30 min. at room temperature.
- 4) Wash the cells twice with 1 mL of the washing buffer.
- 5) Resuspend the cells with 500  $\mu$ L of the washing buffer and analyze by a flow cytometer.

(Positive control for Flow cytometry; Transfectant)



### ***Flow cytometric detection of mouse Stabilin-2 on NIH/3T3 transfectant***

Open: Anti-Stabilin-2 (Mouse) mAb-Alexa Fluor<sup>®</sup> 488 (MBL, code no. D317-A48)  
Closed: Rat IgG2a (isotype control)-Alexa Fluor<sup>®</sup> 488 (MBL, code no. M081-A48)