

# Anti-Stabilin-2 (Mouse) mAb

**CODE No.** D317-3

**CLONALITY** Monoclonal  
**CLONE** #34-2  
**ISOTYPE** Rat IgG2a  
**QUANTITY** 100 µL, 1 mg/mL

**SOURCE** Purified IgG from hybridoma supernatant  
**IMMUNOGEN** Ba/F3 transfectant, 1,144 aa-2,497 aa  
**FORMULATION** PBS containing 50% Glycerol (pH 7.2). No preservative is contained.  
**STORAGE** This antibody solution is stable for one year from the date of purchase when stored at -20°C.

## APPLICATION-CONFIRMED

Flow cytometry 5 µg/mL

## APPLICATIONS-REPORTED

Western blotting 3 µg/mL  
Immunocytochemistry 2.5 µg/mL  
Immunohistochemistry 5 µg/mL  
Neutralization 3 mg/kg

## SPECIES CROSS REACTIVITY on FCM

| Species    | Human      | Mouse        | Rat        | Hamster    |
|------------|------------|--------------|------------|------------|
| Cell       | Not tested | Transfectant | Not tested | Not tested |
| Reactivity |            | +            |            |            |

**Entrez Gene ID** 192188 (Mouse)

## REFERENCES

- 1) McMahan, R. H., *et al.*, *PLoS One* **11**, e0159217 (2016) [FCM]
- 2) Ohyagi, H., *et al.*, *Immunity* **39**, 584-598 (2013) [FCM]
- 3) Hirose, Y., *et al.*, *PNAS*. **109**, 4263-4268 (2012) [WB, Neut]
- 4) Nonaka, H., *et al.*, *Biochem. Biophys. Res. Commun.* **375**, 256-260 (2008) [IC, FCM]
- 5) Nonaka, H., *et al.*, *Dev. Dyn.* **236**, 2258-2267 (2007) [IC, IHC-Fr, FCM]

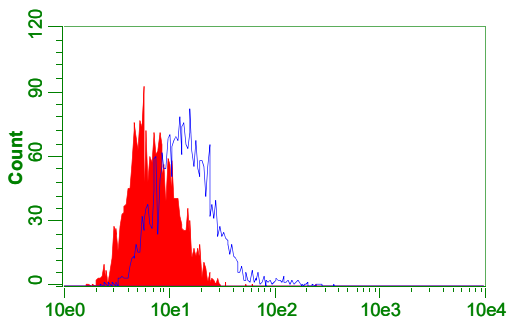
For more information, please visit our web site <https://ruo.mbl.co.jp/>.

The descriptions of the following protocols are examples. Each user should determine the appropriate condition.

### **Flow cytometric analysis**

- 1) Wash the cells ( $3 \times 10^5$  cells/sample) 3 times with 1 mL of washing buffer [PBS containing 2% fetal calf serum (FCS)].
- 2) Add 20  $\mu$ L of Clear Back (human Fc receptor blocking reagent, MBL; code no. MTG-001) to the cell pellet after tapping. Mix well and incubate for 5 min. at room temperature.
- 3) Add 40  $\mu$ L of the primary antibody at the concentration as suggested in the **APPLICATIONS** diluted in the washing buffer. Mix well and incubate for 30 min. at room temperature.
- 4) Wash the cells once with 1 mL of the washing buffer.
- 5) Add PE-conjugated anti-rat IgG antibody diluted with the washing buffer. Mix well and incubate for 20 min. at room temperature.
- 6) Wash the cells once with 1 mL of the washing buffer.
- 7) Resuspend the cells with 500  $\mu$ L of the washing buffer and analyze by a flow cytometer.

(Positive control for Flow cytometry; Transfectant)



### ***Flow cytometric detection of mouse Stabilin-2 in transfectant***

Open: Anti-Stabilin-2 (Mouse) mAb (MBL, code no. D317-3)  
Closed: Rat IgG2a (isotype control) (MBL, code no. M081-3)