

For Research Use Only.
Not for use in diagnostic procedures.



Anti-His-tag mAb-Biotin

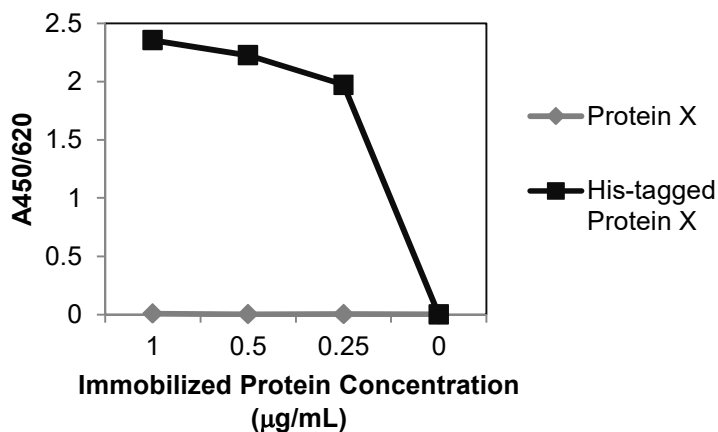
CODE No.	D291-6
CLONALITY	Monoclonal
CLONE	OGHis
ISOTYPE	Mouse IgG2a κ
QUANTITY	50 μ L, 1 mg/mL
SOURCE	Purified IgG from hybridoma supernatant
IMMUNOGEN	6xHis tagged protein
FORMULATION	1 mg/mL in PBS (pH 7.2) containing 1% BSA and 0.09% NaN ₃ <small>*Azide may react with copper or lead in plumbing system to form explosive metal azides. Therefore, always flush plenty of water when disposing materials containing azide into drain.</small>
STORAGE	This antibody solution is stable for one year from the date of purchase when stored at 4°C.
APPLICATION-CONFIRMED	
<u>ELISA</u>	0.25-1 μ g/mL

For more information, please visit our web site <https://ruo.mbl.co.jp/>.

The descriptions of the following protocols are examples. Each user should determine the appropriate condition.

ELISA

- 1) Add 100 μL /well of antigen solution in PBS to the 96-well plate. Incubate overnight at 4°C.
- 2) Add 200 μL /well of 5% BSA in PBS. Incubate overnight at 4°C.
- 3) Add 100 μL /well of primary antibody diluted with PBS as suggested in the **APPLICATION** for 1 hour at room temperature.
(The concentration of antibody will depend on the conditions.)
- 4) Wash the plate with PBS-T [0.05% Tween-20 in PBS] (4 times).
- 5) Add 100 μL /well of 1:50,000 diluted HRP-conjugated streptavidin in PBS. Incubate for 1 hour at room temperature.
- 6) Wash the plate with PBS-T (4 times).
- 7) Add 100 μL /well of substrate solution (ex. TMB). Incubate for appropriate time at room temperature.
- 8) Add 100 μL /well of stop solution (ex. 1 M H_2SO_4).
- 9) Read absorbance at 450 nm.



ELISA for measurement of His-tagged protein