

Human Osteopontin Rabbit Polyclonal Antibody

Cat# CY-P1035

100 µg (0.5 mg/mL x 200 µL)

Clone Name	Applications	Species Cross-Reactivity	Molecular Wt.	Source Isotype
	WB	H	44-75 kDa	Rabbit IgG

Background

Osteopontin (OPN, also designated Bone Sialoprotein 1, Urinary Stone Protein, spp-1, eta-1, nephropontin, uropontin) is an acidic member of the small integrinbinding ligand N-linked glycoprotein (SIBLING) family of extracellular matrix proteins/cytokines that undergoes extensive posttranslational modification, including phosphorylation, glycosylation, and cleavage, yielding molecular mass variants ranging in size from 25 to 75 kDa. The result is a versatile protein(s) with multiple functions arising from its role as a mediator of cell-cell and cell-extracellular matrix (ECM) communication that encompass both normal and tumorigenic developmental processes, immunological responses during inflammation and wound healing, and biomineralization.

OPN contains a hydrophobic leader sequence characteristic of a secreted protein, a potential calcium phosphate apatite binding region of consecutive asparagine residues, a cell attachment RGD sequence, a thrombin cleavage site, and two glutamines that are recognized substrates for transglutaminase supported multimer formation.

Specificity/Sensitivity: Human Osteopontin Antibody detects endogenous levels of Osteopontin.

Source/Purification: Polyclonal antibody is produced by immunizing rabbit with a synthetic peptide, KSKKFRRPDIQYPDATDE (KLH coupled), corresponding to 170-187 a.a. of human Osteopontin isoform a. IgG is purified by peptide-affinity chromatography.

Recommended Antibody Dilutions: Western blotting: 0.5-1 µg/mL.

Storage: Supplied in 20 mM phosphate buffer (pH 7.5), 300 mM NaCl, 50 % glycerol. Store at -20°C.

Applications Key:

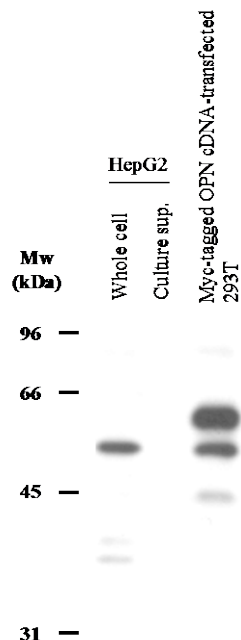
WB: Western blotting, **IP:** Immunoprecipitation, **IHC:** Immunohistochemistry, **IC:** Immunocytochemistry, **F:** Flow cytometry, **E:** ELISA, **FP:** Fluorescence polarization assay

Species Cross-Reactivity Key:

H: Human, **M:** Mouse, **R:** Rat, **Hm:** Hamster, **Mk:** Monkey, **Mi:** Mink, **C:** Chicken, **X:** Xenopus, **Z:** Zebra fish (Species enclosed in parentheses are predicted to react based on 100% sequence homology.)

General References:

1. Franzén A, and Heinegård D. Isolation and characterization of two sialoproteins present only in bone calcified matrix. *Biochem J.* 1985 Dec 15;232(3):715-24.
2. Zhang Q *et al.* Characterization of fetal porcine bone sialoproteins, secreted phosphoprotein I (SPPI, osteopontin), bone sialoprotein, and a 23-kDa glycoprotein. Demonstration that the 23-kDa glycoprotein is derived from the carboxyl terminus of SPPI. *J Biol Chem.* 1990 May 5;265(13):7583-9.
3. Senger DR *et al.* Transformed mammalian cells secrete specific proteins and phosphoproteins. *Cell.* 1979 Apr;16(4):885-93.
4. Craig AM *et al.* Osteopontin, a transformation-associated cell adhesion phosphoprotein, is induced by 12-O-tetradecanoylphorbol 13-acetate in mouse epidermis. *J Biol Chem.* 1989 Jun 5;264(16):9682-9.
5. Singh RP *et al.* Definition of a specific interaction between the early T lymphocyte activation 1 (Eta-1) protein and murine macrophages in vitro and its effect upon macrophages in vivo. *J Exp Med.* 1990 Jun 1;171(6):1931-42.
6. Prince CW *et al.* Osteopontin, a substrate for transglutaminase and factor XIII activity. *Biochem Biophys Res Commun.* 1991 Jun 28;177(3):1205-10.
7. Ashkar S *et al.* Eta-1 (osteopontin): an early component of type-1 (cell-mediated) immunity. *Science.* 2000 Feb 4;287(5454):860-4.
8. Diao H *et al.* Osteopontin as a mediator of NKT cell function in T cell-mediated liver diseases. *Immunity.* 2004 Oct;21(4):539-50.
9. Nomiya T *et al.* Osteopontin mediates obesity-induced adipose tissue macrophage infiltration and insulin resistance in mice. *J Clin Invest.* 2007 Oct;117(10):2877-88.

Fig.1 Western blot analysis of Human Osteopontin expression

Western Immunoblotting Protocol

Solutions and Reagents

Note: Prepare solutions with Milli-Q or equivalently purified water.

Transfer Buffer: 25 mM Tris base, 0.2 M glycine, 20% methanol (pH 8.5)

SDS Sample Buffer (1X): 62.5 mM Tris-HCl (pH 6.8 at 25°C), 2% w/v SDS, 10% glycerol, 50 mM DTT, 0.01% w/v bromophenol blue or phenol red

Blocking Buffer: 1X TBS, 0.1% Tween-20 with 5% w/v nonfat dry milk; for 150 mL, add 15 mL 10X TBS to 135 mL water, mix. Add 7.5 g nonfat dry milk and mix well. While stirring, add 0.15 mL Tween-20 (100%).

10X TBS (Tris-buffered saline): To prepare 1 liter of 10X TBS: 24.2 g Tris base, 80 g NaCl; adjust pH to 7.6 with HCl (use at 1X).

Primary Antibody Dilution Buffer: 1X TBS, 0.1% Tween-20 with 5% blocking agent for 20 mL, add 2 mL 10X TBS to 18 mL water, mix. Add 1.0 g BSA and mix well. While stirring, add 20 µL Tween-20 (100%).

Chemiluminescent HRP Detection: secondary anti-rabbit antibody conjugated to horseradish peroxidase (HRP), ECL™ chemiluminescent reagent (Amersham Pharmacia)

Wash Buffer TBS/T: 1X TBS, 0.1% Tween-20

Blotting Membrane: This protocol has been optimized for nitrocellulose membranes, which we recommend. PVDF membranes may also be used.

Protein Blotting

A general protocol for sample preparation is described below.

1. Treat cells by adding fresh media containing regulator for desired time.
2. Aspirate media from cultures; wash cells with 1X PBS, aspirate.
3. Lyse cells by adding 1X SDS Sample Buffer (100 µL per well of 6-well plate or 500 µL per plate of 10 cm² plate). Immediately scrape the cells off the plate and transfer the extract to a microcentrifuge tube. Keep on ice.
4. Sonicate for 10–15 seconds to shear DNA and reduce sample viscosity.
5. Heat a 20 µL sample to 95–100°C for 5 minutes, cool on ice.
6. Microcentrifuge for 5 minutes.
7. Load 20 µL onto SDS-PAGE gel (10 cm x 10 cm).
8. Electrotransfer to nitrocellulose membrane.

Membrane Blocking and Antibody Incubations

Note: Volumes are for 10 cm x 10 cm (100 cm²) of membrane; for different sized membranes, adjust volumes accordingly.

1. (Optional) After transfer, wash nitrocellulose membrane with 25 mL TBS for 5 minutes at room temperature.
2. Incubate membrane in 25 mL of Blocking Buffer for 1 hour at room temperature.
3. Wash 3 times for 5 minutes each with 15 mL of TBS/T.
4. Incubate membrane and primary antibody (at the appropriate dilution) in 10 mL Primary Antibody Dilution Buffer with gentle agitation overnight at 4°C.
5. Wash 3 times for 5 minutes each with 15 mL of TBS/T.
6. Incubate membrane with HRP-conjugated secondary antibody (1:3000 in 10 mL of Blocking Buffer with gentle agitation for 1 hour at room temperature.
7. Wash 3 times for 5 minutes each with 15 mL of TBS/T.

For Research Use Only, Not for use in diagnostic procedures

Detection of Proteins

1. Incubate membrane with 4 mL ECL™ with gentle agitation for 1 minute at room temperature.
2. Drain membrane of excess developing solution, do not let dry, wrap in plastic wrap and expose to x-ray film. An initial ten-second exposure should indicate the proper exposure time.

Related Products

- * **Human S100A4 (p9Ka) Rabbit Polyclonal antibody Cat# CY-P1026**
- * **Human S100A12 (EN-RAGE) Rabbit Polyclonal antibody Cat# CY-P1027**
- * **Human S100P Rabbit Polyclonal antibody Cat# CY-P1028**
- * **Human S100A10 Rabbit Polyclonal antibody Cat# CY-P1033**

MANUFACTURED BY



MEDICAL & BIOLOGICAL LABORATORIES CO., LTD.

URL: <http://ruo.mbl.co.jp>

E-mail: support@mbi.co.jp

TEL: +81-52-238-1904

CycLex/CircuLex products are supplied for research use only. CycLex/CircuLex products and components thereof may not be resold, modified for resale, or used to manufacture commercial products without prior written approval from MBL. To inquire about licensing for such commercial use, please contact us via email.