

ELISA Kit for Measuring Mouse ISG15

# CircuLex Mouse ISG15 ELISA Kit

Cat# CY-8091

Intended Use.....	1
Storage.....	1
Introduction.....	2
Principle of the Assay.....	2-3
Materials Provided.....	3
Materials Required but not Provided.....	4
Precautions and Recommendations.....	5
Sample Collection and Storage.....	6
Detailed Protocol.....	7-8
Calculations.....	9
Measurement Range.....	9
Troubleshooting.....	9
Reagent Stability.....	9
Assay Characteristics.....	10-12
Example of Test Results.....	13-15
References.....	16

## Intended Use

The MBL Research Product **CircuLex Mouse ISG15 ELISA Kit** is used for the quantitative measurement of mouse ISG15 in cell lysate and cell culture supernatant.

Individual users should determine appropriate conditions when using other types of samples.

**This assay kit is for research use only and not for use in diagnostic or therapeutic procedures.**

### Storage

- Upon receipt store all components at 4°C.
- Don't expose reagents to excessive light.

---

## Introduction

---

ISG15 (Interferon (IFN)-Stimulated Gene 15) is a ubiquitin-like protein containing two ubiquitin homology domains and becomes conjugated to a variety of proteins when cells are treated with type I interferon or lipopolysaccharide. Therefore this modification (so called, ISGylation) appear to be involved in type I interferon signal transduction. Unlike ubiquitylation, ISGylation does not drive protein degradation (regulated by K48-linked ubiquitin). ISG15 is expressed as a 165 amino acid precursor that is subsequently processed to expose the C-terminal sequence LRLRGG. Like ubiquitin, this C-terminal diglycine residue is adenylated and conjugated by a thiolester bond to sequential cystine residues on the E1-activating, E2-carrier and E3-ligase enzymes, before being transferred to lysine residues on target protein substrates.

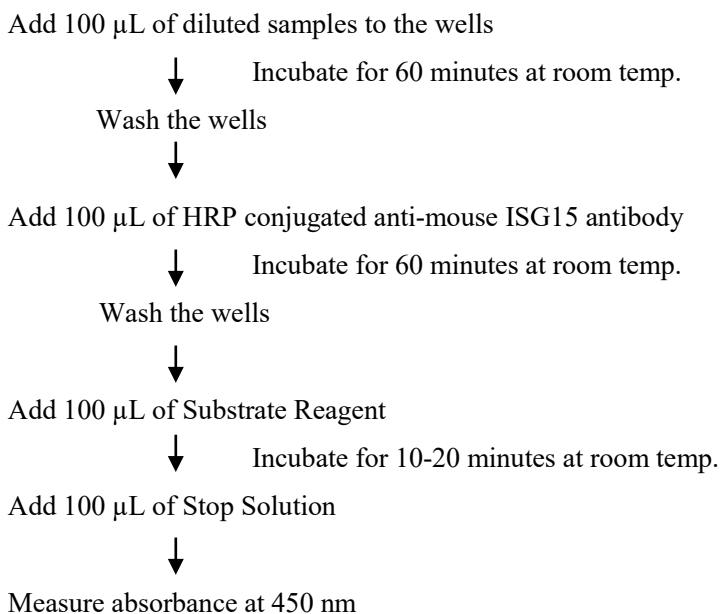
ISG15 can also be found extracellularly in an unconjugated form. Human lymphocytes and monocytes were reported to release free ISG15 following treatment with IFN- $\beta$ . More than 50 % of the total ISG15 could be detected in the culture medium after 24 hours following IFN stimulation. In addition, ISG15 is highly elevated and extensively conjugated to cellular proteins in many tumors and tumor cell lines. The increased levels of ISG15 in tumor cells were found to be associated with decreased levels of polyubiquitinated proteins.

---

## Principle of the Assay

---

The MBL Research Product **CircuLex Mouse ISG15 ELISA Kit** employs the quantitative sandwich enzyme immunoassay technique. An antibody specific for mouse ISG15 is pre-coated onto a microplate. Standards and samples are pipetted into the wells and the immobilized antibody binds any mouse ISG15 present. After washing away any unbound substances, an HRP conjugated antibody specific for mouse ISG15 is added to the wells. Following a wash to remove any unbound antibody HRP conjugate, the remaining conjugate is allowed to react with the substrate H<sub>2</sub>O<sub>2</sub>-tetramethylbenzidine. The reaction is stopped by addition of acidic solution and absorbance of the resulting yellow product is measured at 450 nm. The absorbance is proportional to the concentration of mouse ISG15. A standard curve is constructed by plotting absorbance values versus mouse ISG15 concentrations of calibrators, and concentrations of unknown samples are determined using this standard curve.

**Summary of Procedure**

---

**Materials Provided**

---

All samples and standards should be assayed in duplicate. The following components are supplied and are sufficient for the one 96-well microplate kit.

**Microplate:** One microplate supplied ready to use, with 96 wells (12 strips of 8-wells) in a foil, zip-lock bag with a desiccant pack. Wells are coated with anti-mouse ISG15 antibody as a capture antibody.

**10X Wash Buffer:** One bottle containing 100 mL of 10X buffer containing Tween®-20

**Dilution Buffer:** One bottle containing 50 mL of 1X buffer; use for sample dilution. Ready to use.

**Mouse ISG15 Standard:** One vial containing X\* ng of lyophilized recombinant mouse ISG15  
**\*The amount is changed depending on lot. See the real "User's Manual" included in the kit box.**

**HRP conjugated Detection Antibody:** One bottle containing 12 mL of HRP (horseradish peroxidase) conjugated anti-mouse ISG15 antibody. Ready to use.

**Substrate Reagent:** One bottle containing 20 mL of the chromogenic substrate, tetra-methylbenzidine (TMB). Ready to use.

**Stop Solution:** One bottle containing 20 mL of 1 N H<sub>2</sub>SO<sub>4</sub>. Ready to use.

---

## **Materials Required but not Provided**

---

- **Pipettors:** 2-20  $\mu$ L, 20-200  $\mu$ L and 200-1,000  $\mu$ L precision pipettors with disposable tips.
- **Precision repeating pipettor**
- **Orbital microplate shaker**
- **Microcentrifuge and tubes** for sample preparation.
- **Vortex mixer**
- **(Optional) Microplate washer:** Manual washing is possible but not preferable.
- **Plate reader** capable of measuring absorbance in 96-well plates at dual wavelengths of 450 nm/540 nm. Dual wavelengths of 450/550 or 450/595 nm can also be used. The plate can also be read at a single wavelength of 450 nm, which will give a somewhat higher reading.
- **(Optional) Software package facilitating data generation and analysis**
- **500 or 1,000 mL graduated cylinder.**
- **Reagent reservoirs**
- **Deionized water of the highest quality**
- **Disposable paper towels**

---

## Precautions and Recommendations

---

- **Although we suggest to conduct experiments as outlined below, the optimal experimental conditions will vary depending on the parameters being investigated, and must be determined by the individual user.**
- Allow all the components to come to room temperature before use.
- All microplate strips that are not immediately required should be returned to the zip-lock pouch, which must be carefully resealed to avoid moisture absorption.
- Do not use kit components beyond the indicated kit expiration date.
- Use only the microtiter wells provided with the kit.
- Rinse all detergent residues from glassware.
- Use deionized water of the highest quality.
- Do not mix reagents from different kits.
- The buffers and reagents in this kit may contain preservatives or other chemicals. Care should be taken to avoid direct contact with these reagents.
- Do not mouth pipette or ingest any of the reagents.
- Do not smoke, eat, or drink when performing the assay or in areas where samples or reagents are handled.
- Dispose of tetra-methylbenzidine (TMB) containing solutions in compliance with local regulations.
- Avoid contact with the acidic Stop Solution and Substrate Solution, which contains hydrogen peroxide.
- Wear gloves and eye protection when handling immunodiagnostic materials and samples of human origin, and these reagents. In case of contact with the Stop Solution and the Substrate Solution, wash skin thoroughly with water and seek medical attention, when necessary.
- **Biological samples may be contaminated with infectious agents. Do not ingest, expose to open wounds or breathe aerosols. Wear protective gloves and dispose of biological samples properly.**
- **CAUTION: Sulfuric Acid is a strong acid. Wear disposable gloves and eye protection when handling Stop Solution.**

---

## Sample Collection and Storage

---

**Cell lysate:**

1. Harvest and pellet cells by centrifugation using standard methods.
2. Resuspend the cell pellet with an appropriate extraction buffer (for example; 20 mM HEPES-KOH, pH 7.5, 250 mM NaCl, 0.1 % NP-40, 2 mM CaCl<sub>2</sub>, 1 mM EDTA, 0.2 mM PMSF, 1 µg/mL pepstatin, 0.5 µg/mL leupeptin, 0.5 mM DTT) and lyse the resuspended cells using either a Dounce Homogenizer, sonication, or three cycles of freezing and thawing.
3. Transfer extracts to microcentrifuge tubes and centrifuge at 15,000 rpm for 10 minutes at 4°C.
4. Aliquot cleared lysate to a clean microfuge tube.
5. Assay immediately or store the samples on ice for a few hours before assaying. Aliquots of the samples may also be stored at below -70°C for extended periods of time. Avoid repeated freeze-thaw cycles.

**Cell culture supernatant:** Remove any particulates by centrifugation and assay immediately or aliquot and store samples at below -70°C. Avoid repeated freeze-thaw cycles.

**Other biological samples:** MBL has not tested.

(e.g. Remove any particulates by centrifugation and assay immediately or aliquot and store samples at below -70°C. Avoid repeated freeze-thaw cycles. Individual users should determine appropriate conditions when using other types of samples.)

---

## Detailed Protocol

---

The MBL Research Product **CircuLex Mouse ISG15 ELISA Kit** is provided with removable strips of wells so the assay can be carried out on separate occasions using only the number of strips required for the particular determination. Since experimental conditions may vary, an aliquot of the mouse ISG15 Standard within the kit, should be included in each assay as a calibrator. Disposable pipette tips and reagent troughs should be used for all liquid transfers to avoid cross-contamination of reagents or samples.

### Preparation of Working Solutions

All reagents need to be brought to room temperature prior to the assay. Assay reagents are supplied ready-to-use, with the exception of **10X Wash Buffer** and **Mouse ISG15 Standard**.

1. Prepare a working solution of Wash Buffer by adding 100 mL of the **10X Wash Buffer** to 900 mL of deionized (distilled) water (ddH<sub>2</sub>O). Mix well. Store at 4°C for two weeks or -20°C for long-term storage.
2. Reconstitute **Mouse ISG15 Standard** with **X\* mL** of **ddH<sub>2</sub>O**. After dissolved by gently mixing, immediately dispense in small aliquots (e.g. 100 µL) to micro-centrifuge tubes and store at below -70°C to avoid repeated freezing and thawing. The concentration of the mouse ISG15 in vial should be **120 ng/mL**, which is referred to as a **Master Standard** of mouse ISG15.

**\*The amount is changed depending on lot. See the real "User's Manual" included in the kit box.**

Prepare Standard Solutions as follows:

Use the **Master Standard** to produce a dilution series (below). Mix each tube thoroughly before the next transfer. The 12 ng/mL standard (Std.1) serves as the highest standard. The **Dilution Buffer** serves as the zero standard (Blank).

	Volume of Standard	Dilution Buffer	Concentration
Std.1	60 µL of Master Standard	540 µL	12.0 ng/mL
Std.2	300 µL of Std. 1 (12.0 ng/ml)	300 µL	6.0 ng/mL
Std.3	300 µL of Std. 2 (6.0 ng/ml)	300 µL	3.0ng/mL
Std.4	300 µL of Std. 3 (3.0 ng/ml)	300 µL	1.5 ng/mL
Std.5	300 µL of Std. 4 (1.5 ng/ml)	300 µL	0.75 ng/mL
Std.6	300 µL of Std. 5 (0.75 ng/ml)	300 µL	0.375 ng/mL
Std.7	300 µL of Std. 6 (0.375 ng/ml)	300 µL	0.188 ng/mL
Blank	-	300 µL	0 ng/mL

**Note:** Do not use a Repeating pipette. Change tips for every dilution. Wet tip with Dilution Buffer before dispensing. Unused portions of Master Standard should be aliquoted and stored at below -70°C immediately. Avoid multiple freeze and thaw cycles.

### Sample Preparation

Dilute samples with **Dilution Buffer**.

- Optimal dilution of cell culture supernatant for measurement of ISG15 depends on cell number and IFN-does; require neat to appropriate dilution.

## Assay Procedure

1. Remove the appropriate number of microtiter wells from the foil pouch and place them into the well holder. Return any unused wells to the foil pouch, refold, seal with tape and store at 4°C.
2. Dilute samples with **Dilution Buffer**. (See “Sample Preparation” above.)
3. Pipette **100 µL** of **Standard Solutions (Std1-Std7, Blank)** and **diluted samples** in duplicates, into the appropriate wells.
4. Incubate the plate **at room temperature (ca. 25°C) for 60 minutes, shaking at ca. 300 rpm on an orbital microplate shaker.**
5. Wash 4-times by filling each well with Wash Buffer (350 µL) using a squirt bottle, multi-channel pipette, manifold dispenser or microplate washer.
6. Add **100 µL** of **HRP conjugated Detection Antibody** into each well.
7. Incubate the plate **at room temperature (ca. 25°C) for 60 minutes, shaking at ca. 300 rpm on an orbital microplate shaker.**
8. Wash 4-times by filling each well with Wash Buffer (350 µL) using a squirt bottle, multi-channel pipette, manifold dispenser or microplate washer.
9. Add **100 µL** of **Substrate Reagent**. Avoid exposing the microtiter plate to direct sunlight. Covering the plate with e.g. aluminum foil is recommended. Return Substrate Reagent to 2-8°C immediately after the necessary volume is removed
10. Incubate the plate **at room temperature for 10-20 minutes, shaking at ca. 300 rpm on an orbital microplate shaker.** The incubation time may be extended up to 30 minutes if the reaction temperature is below than 20°C.
11. Add **100 µL** of **Stop Solution** to each well in the same order as the previously added Substrate Reagent.
12. Measure absorbance in each well using a spectrophotometric microplate reader at dual wavelengths of 450/540 nm. Dual wavelengths of 450/550 or 450/595 nm can also be used. Read the microplate at 450 nm if only a single wavelength can be used. Wells must be read within 30 minutes of adding the Stop Solution.

**Note-1:** Complete removal of liquid at each step is essential to good performance. After the last wash, remove any remaining Wash Buffer by aspirating or decanting. Invert the plate and blot it against clean paper towels.

**Note-2:** Reliable standard curves are obtained when either O.D. values do not exceed 0.25 units for the blank (zero concentration), or 3.0 units for the highest standard concentration.

**Note-3:** If the microplate reader is not capable of reading absorbance greater than the absorbance of the highest standard, perform a second reading at 405 nm. A new standard curve, constructed using the values measured at 405 nm, is used to determine ISG15 concentration of off-scale samples. The readings at 405 nm should not replace the on-scale readings at 450 nm.



---

## Calculations

---

Average the duplicate readings for each standard, control, and sample and subtract the average zero standard optical density. Plot the optical density for the standards versus the concentration of the standards and draw the best curve. The data can be linearized by using log/log paper and regression analysis may be applied to the log transformation. To determine the mouse ISG15 concentration of each sample, first find the absorbance value on the y-axis and extend a horizontal line to the standard curve. At the point of intersection, extend a vertical line to the x-axis and read the corresponding mouse ISG15 concentration. If the samples have been diluted, the concentration read from the standard curve must be multiplied by the dilution factor.

1. The dose-response curve of this assay fits best to a sigmoidal 4-parameter logistic equation. The results of unknown samples can be calculated with any computer program having a 4-parameter logistic function. It is important to make an appropriate mathematical adjustment to accommodate for the dilution factor.
2. Most microtiter plate readers perform automatic calculations of analyte concentration. The calibration curve is constructed by plotting the absorbance (Y) of calibrators versus log of the known concentration (X) of calibrators, using the four-parameter function. Alternatively, the logit log function can be used to linearize the calibration curve (i.e. logit of absorbance (Y) is plotted versus log of the known concentration (X) of calibrators).

---

## Measurement Range

---

The measurement range is 0.188 ng/mL to 12 ng/mL. Any sample reading higher than the highest standard should be diluted with Dilution Buffer in higher dilution and re-assayed. Dilution factors need to be taken into consideration in calculating the mouse ISG15 concentration.

---

## Troubleshooting

---

1. All samples and controls should be assayed in duplicate, using the protocol described in the **Detailed Protocol**. Incubation times or temperatures significantly different from those specified may give erroneous results.
2. Poor duplicates, accompanied by elevated values for wells containing no sample, indicate insufficient washing. If all instructions in the **Detailed Protocol** were followed accurately, such results indicate a need for washer maintenance.
3. Overall low signal may indicate that desiccation of the plate has occurred between the final wash and addition of Substrate Reagent. Do not allow the plate to dry out. Add Substrate Reagent immediately after wash.

---

## Reagent Stability

---

All of the reagents included in the MBL Research Product **CircuLex Mouse ISG15 ELISA Kit** have been tested for stability. Reagents should not be used beyond the stated expiration date. Upon receipt, kit reagents should be stored at 4°C, except the reconstituted ISG15 Standard must be stored at below -70°C. Coated assay plates should be stored in the original foil bag sealed by the zip lock and containing a desiccant pack.

---

## Assay Characteristics

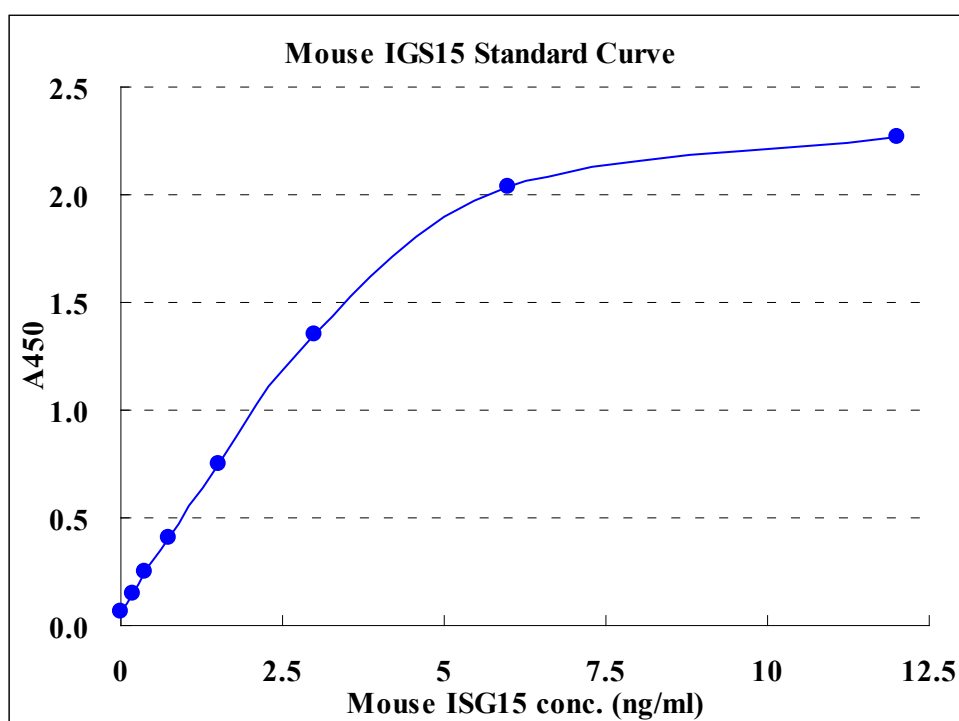
---

### 1. Sensitivity

The limit of detection (defined as such a concentration of mouse ISG15 giving absorbance higher than mean absorbance of blank\* plus three standard deviations of the absorbance of blank: A blank + 3SD blank) is better than 48.3 pg/ml of sample.

\* Dilution Buffer was pipetted into blank wells.

#### Typical Standard Curve



## 2. Precision

### Intra-assay Precision (Precision within an assay)

Three samples of known concentration were tested sixteen times on one plate to assess intra-assay precision.

- Intra-assay (Within-Run, n=16) CV=2.6-3.9 %

	Mouse ISG15 conc. (ng/mL)		
	Sample 1	Sample 2	Sample 3
1	0.73	2.50	2.83
2	0.77	2.46	2.98
3	0.72	2.39	3.01
4	0.70	2.39	3.06
5	0.71	2.29	2.93
6	0.73	2.40	3.06
7	0.70	2.43	2.98
8	0.69	2.31	3.12
9	0.76	2.42	3.03
10	0.78	2.40	3.19
11	0.72	2.34	3.11
12	0.74	2.30	3.12
13	0.70	2.33	3.00
14	0.72	2.45	3.01
15	0.72	2.37	3.07
16	0.68	2.35	3.25
<b>MAX.</b>	<b>0.78</b>	<b>2.50</b>	<b>3.25</b>
<b>MIN.</b>	<b>0.68</b>	<b>2.29</b>	<b>2.83</b>
<b>MEAN</b>	<b>0.72</b>	<b>2.38</b>	<b>3.05</b>
<b>S.D.</b>	<b>0.03</b>	<b>0.06</b>	<b>0.10</b>
<b>C.V.</b>	<b>3.9%</b>	<b>2.6%</b>	<b>3.3%</b>

### Inter-assay Precision (Precision between assays)

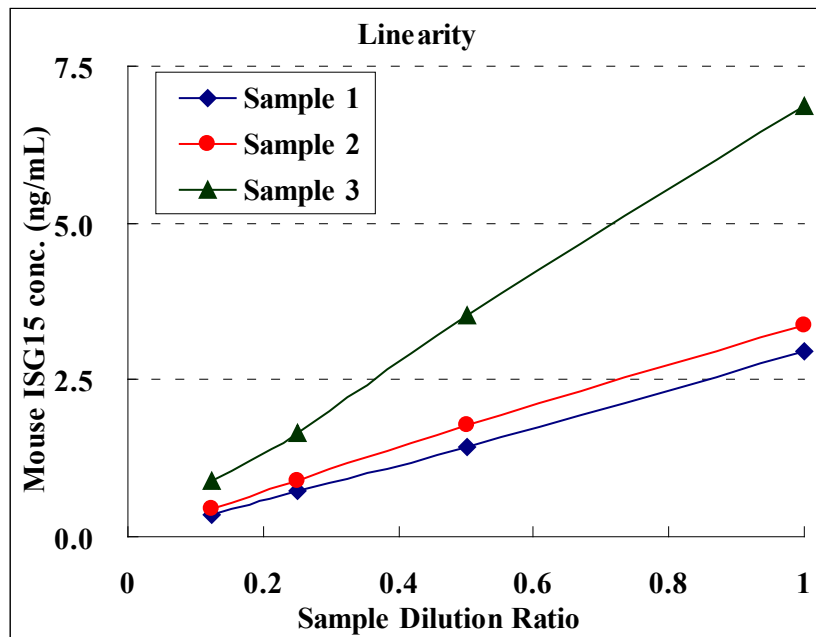
Three samples of known concentration were tested in five separate assays to assess inter-assay precision.

- Inter-assay (Run-to-Run, n=5) CV=5.0-7.7 %

	Mouse ISG15 conc. (ng/mL)		
	Sample 1	Sample 2	Sample 3
1	1.84	3.49	8.80
2	1.59	3.19	7.69
3	1.59	3.04	7.56
4	1.78	3.21	8.30
5	1.56	3.21	7.86
<b>MAX.</b>	<b>1.84</b>	<b>3.49</b>	<b>8.80</b>
<b>MIN.</b>	<b>1.56</b>	<b>3.04</b>	<b>7.56</b>
<b>MEAN</b>	<b>1.67</b>	<b>3.23</b>	<b>8.04</b>
<b>S.D.</b>	<b>0.13</b>	<b>0.16</b>	<b>0.50</b>
<b>C.V.</b>	<b>7.7%</b>	<b>5.0%</b>	<b>6.3%</b>

### 3. Linearity

To assess the linearity of the assay, samples containing and/or spiked with high concentrations of mouse ISG15 were serially diluted with the Dilution Buffer to produce samples with values within the dynamic range of the assay.



### Example of Test Results

Fig.1 Concentrations of total mouse ISG15 in cell lysates of three mouse cell lines after IFN $\alpha$ -treatment for 24 hours

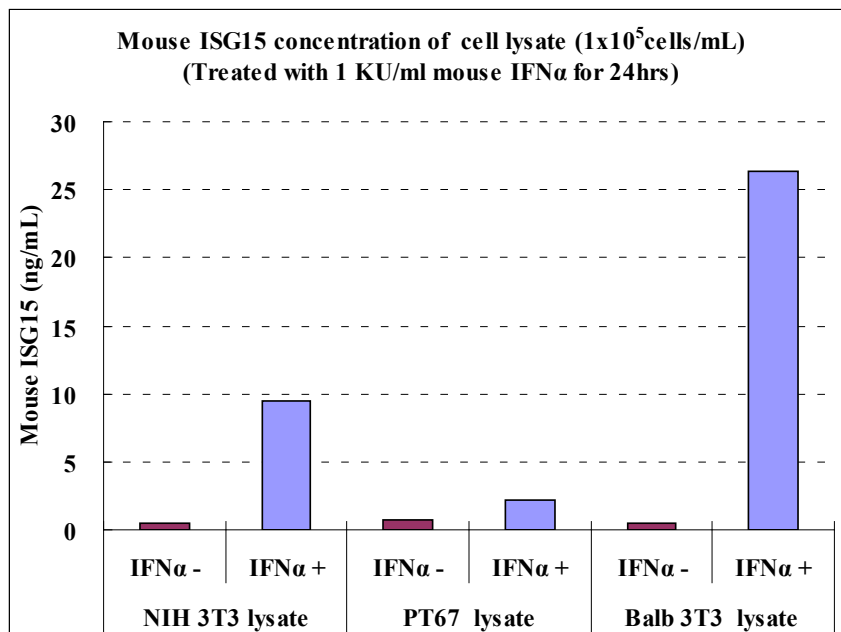


Fig.2 Concentrations of unconjugated (free form) mouse ISG15 in Balb/3T3 culture supernatant after IFN $\alpha$ -treatment for indicated times

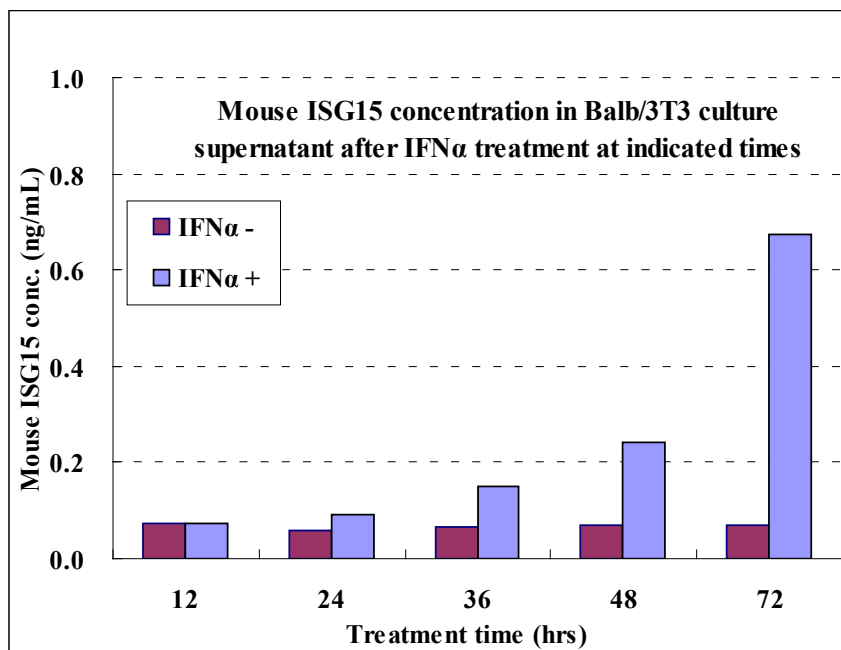


Fig.3 Time course of mouse ISG15 induction in Balb/3T3 cell lysate by IFN $\alpha$ -treatment

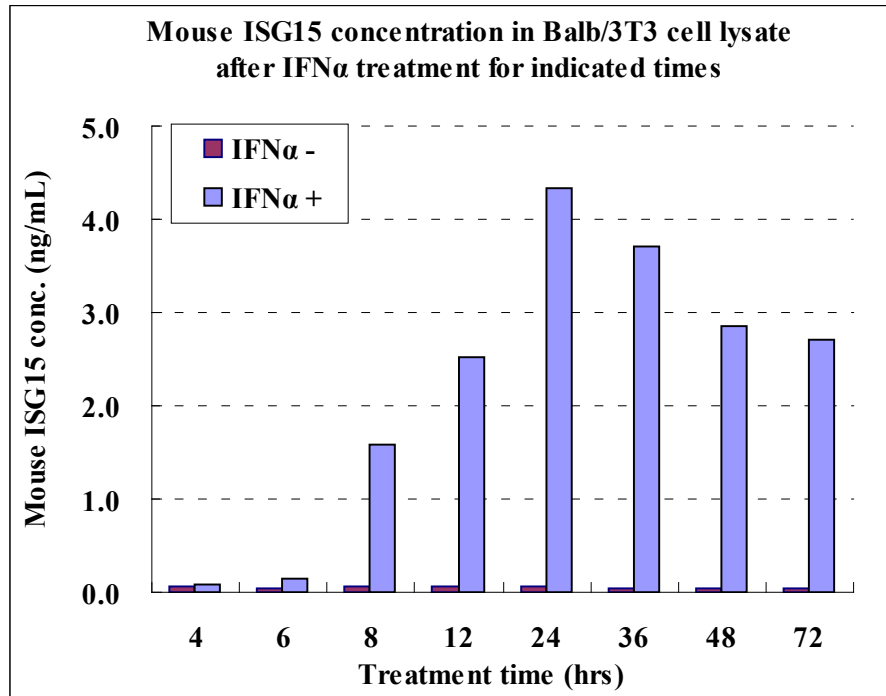


Fig.4 IFN $\alpha$ -dose dependent induction of mouse ISG15 in cell lysate of Balb/3T3 cultured in 12-well plate for 24 hours

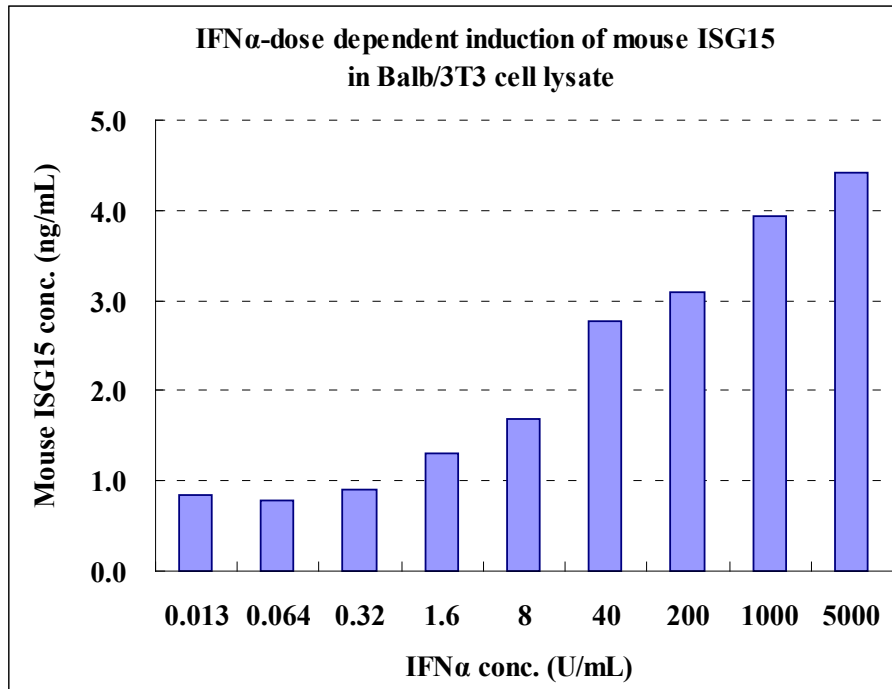
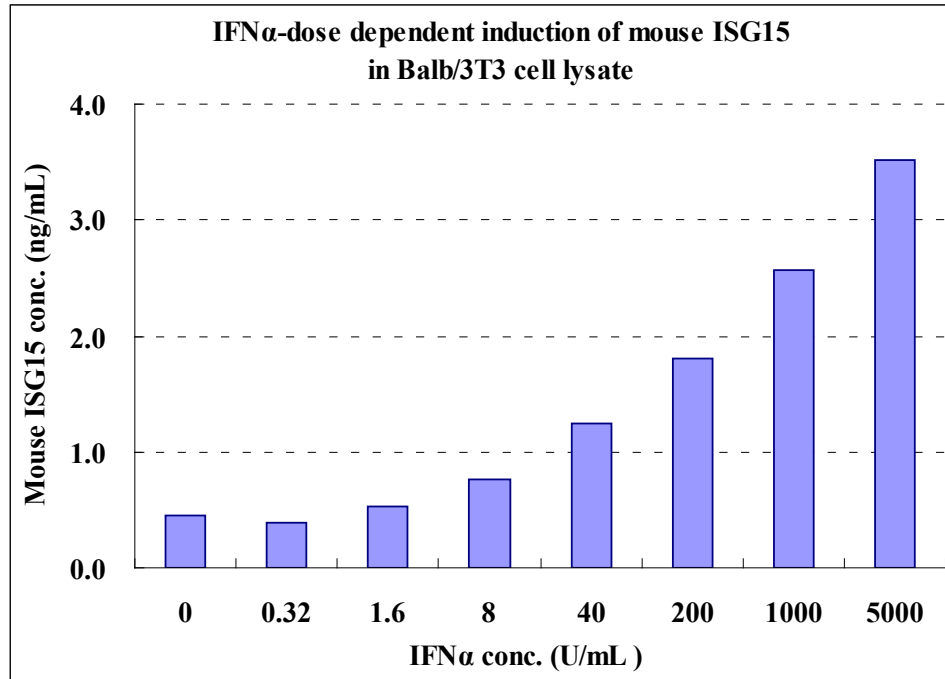


Fig.5 IFN $\alpha$ -dose dependent induction of mouse ISG15 in cell lysate of Balb/3T3 cultured in 96-well plate for 24 hours



---

## References

---

1. Korant BD, Blomstrom DC, Jonak GJ, Knight E, Jr (1984) J Biol Chem; 259: 14835–14839.
2. Blomstrom DC, Fahey D, Kutny R, Korant BD, Knight E Jr (1986) J Biol Chem 261: 8811–8816.
3. Haas AL, Ahrens P, Bright PM, Ankel H (1987) J Biol Chem 1987; 262: 11315–11323.
4. Feltham, N., Hillman, M., Jr., Cordova, B., Fahey, D., Larsen, B., Blomstrom, DC. & Knight, E., Jr. (1989) J. Interferon Res. 9: 493-507.
5. Knight, E Jr & B. Cordova (1991) J Immunol. 146: 2280-2284.
6. Loeb, K. L. & Haas, A. L. (1992) J. Biol. Chem. 267: 7806-7813.
7. D'Cunha, J, Knight E Jr, Haas A.L., Truitt R. L. & Borden EC. (1996) Proc Natl Acad Sci USA 93: 211-215
8. D'Cunha, J, Ramanujam S., Wagner R.J., Witt PL., Knight E. Jr. & Borden EC. (1996) J Immunol 157: 4100-4108.
9. Austin, K J, S. K. Ward, M. G. Teixeira, Dean VC., Moore DW. & Hansen TR. (1996) Biol Reprod 54: 600-606
10. Kelso A (1998) Immunol Cell Biol 76: 300-317
11. Durfee Larissa A., Lyon Nancy, Seo Kyungwoon, and Huibregtse Jon M. (2010) Mol Cell 38: 722-732.

For more information, please visit our web site.

<https://ruo.mbl.co.jp/>

### MANUFACTURED BY

**MBL** A JSR Life Sciences Company  
**MEDICAL & BIOLOGICAL LABORATORIES CO., LTD.**

URL: <https://ruo.mbl.co.jp>

E-mail: [support@mbl.co.jp](mailto:support@mbl.co.jp)

CycLex/CircuLex products are supplied for research use only. CycLex/CircuLex products and components thereof may not be resold, modified for resale, or used to manufacture commercial products without prior written approval from MBL. To inquire about licensing for such commercial use, please contact us via email.