



ELISA Kit for Measuring Human S100A4

# CircuLex S100A4 ELISA Kit Ver.2

Cat# CY-8086

Intended Use..... 1  
Storage..... 1  
Introduction.....2  
Principle of the Assay..... 2-3  
Materials Provided.....3  
Materials Required but not Provided..... 4  
Precautions and Recommendations..... 5  
Sample Collection and Preparation.....6  
Detailed Protocol..... 7-8  
Calculations.....9  
Measurement Range.....9  
Troubleshooting..... 9  
Reagent Stability.....9  
Assay Characteristics..... 10-12  
Example of Test Results..... 12  
References..... 13

## Intended Use

The MBL Research Product **Circulex S100A4 ELISA Kit** is used for the quantitative measurement of human S100A4 in cell culture supernatant.

Individual users should determine appropriate conditions when using other types of samples.

**This assay kit is for research use only and not for use in diagnostic or therapeutic procedures.**

### Storage

- Upon receipt store all components at 4°C.
- Don't expose reagents to excessive light.

---

## **Introduction**

---

Members of the S100 protein family are low molecular mass acidic proteins characterized by cell-type-specific expression and the presence of 2 EF-hand calcium-binding domains with different affinities for calcium (1). Elevated levels of one S100 protein, S100A4, are closely associated with the process of metastasis in breast and other cancer cells in rodent animal models and in human cancer specimens. S100A4 or its mRNA is found at an elevated level in metastatic relative to non-metastatic rat (2) and mouse (3) tumor cell lines and malignant relative to benign human breast tumors (4). Elevation of the level of rat (5) or human (6) S100A4 in benign rat mammary tumor cells results in the acquisition of metastatic capability by some of the cells. In transgenic mouse models of breast cancer, elevated levels of S100A4 in neu oncogene-induced (7), or in murine mammary tumor virus-induced (8), benign mammary tumors yield lung metastases. In colorectal adenocarcinoma specimens, elevated levels of immunocytochemically detected S100A4 are associated with the more malignant carcinomatous regions of the primary tumors and with liver metastases (9).

---

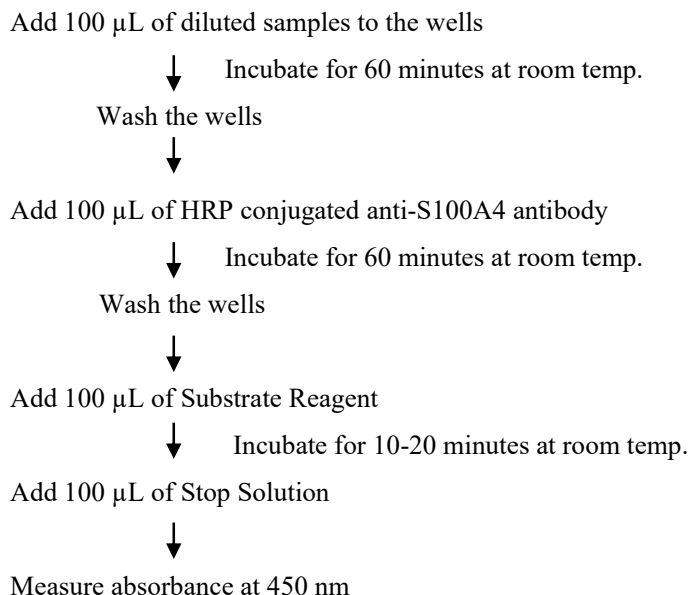
## **Principle of the Assay**

---

The CircuLex S100A4 ELISA Kit employs the quantitative sandwich enzyme immunoassay technique. A monoclonal antibody specific for S100A4 has been pre-coated onto a microplate. Standards and samples are pipetted into the wells and the immobilized antibody binds any S100A4 present. After washing away any unbound substances, an HRP conjugated antibody specific for S100A4 is added to the wells. Following a wash to remove any unbound antibody HRP conjugate, the remaining conjugate is allowed to react with the substrate H<sub>2</sub>O<sub>2</sub>-tetramethylbenzidine. The reaction is stopped by addition of acidic solution and absorbance of the resulting yellow product is measured at 450 nm. The absorbance is proportional to the concentration of S100A4. A standard curve is constructed by plotting absorbance values versus S100A4 concentrations of calibrators, and concentrations of unknown samples are determined using this standard curve.

The CircuLex S100A4 ELISA Kit is designed to measure the concentration of S100A4 from human cell extract, cultured human macrophages, or conditioned medium.

## Summary of Procedure



---

## Materials Provided

---

All samples and standards should be assayed in duplicate. The following components are supplied and are sufficient for the one 96-well microplate kit.

**Microplate:** One microplate supplied ready to use, with 96 wells (12 strips of 8-wells) in a foil, zip-lock bag with a desiccant pack. Wells are coated with anti-S100A4 monoclonal antibody (AF-1F2) as a capture antibody.

**10X Wash Buffer:** One 100 mL bottle of 10X buffer containing Tween®-20

**Dilution Buffer:** One bottle containing 50 mL of 1X buffer; use for sample dilution. Ready to use.

**S100A4 Standard:** One vial containing X\* ng each of lyophilized recombinant human S100A4  
**\*The amount is changed depending on lot. See the real "User's Manual" included in the kit box.**

**HRP conjugated Detection Antibody:** One vial containing 12 mL of HRP (horseradish peroxidase) conjugated anti-S100A4 antibody. Ready to use.

**Substrate Reagent:** One bottle containing 20 mL of the chromogenic substrate, tetra-methylbenzidine (TMB). Ready to use.

**Stop Solution:** One bottle containing 20 mL of 1 N H<sub>2</sub>SO<sub>4</sub>. Ready to use.

---

## **Materials Required but not Provided**

---

- **Pipettors:** 2-20  $\mu\text{L}$ , 20-200  $\mu\text{L}$  and 200-1,000  $\mu\text{L}$  precision pipettors with disposable tips.
- **Precision repeating pipettor**
- **Orbital microplate shaker**
- **Microcentrifuge and tubes** for sample preparation.
- **Vortex mixer**
- **(Optional) Microplate washer:** Manual washing is possible but not preferable.
- **Plate reader** capable of measuring absorbance in 96-well plates at dual wavelengths of 450 nm/540 nm. Dual wavelengths of 450/550 or 450/595 nm can also be used. The plate can also be read at a single wavelength of 450 nm, which will give a somewhat higher reading.
- **(Optional) Software package facilitating data generation and analysis**
- **500 or 1,000 mL graduated cylinder.**
- **Reagent reservoirs**
- **Deionized water of the highest quality**
- **Disposable paper towels**

---

## Precautions and Recommendations

---

- **Although we suggest to conduct experiments as outlined below, the optimal experimental conditions will vary depending on the parameters being investigated, and must be determined by the individual user.**
- Allow all the components to come to room temperature before use.
- All microplate strips that are not immediately required should be returned to the zip-lock pouch, which must be carefully resealed to avoid moisture absorption.
- Do not use kit components beyond the indicated kit expiration date.
- Use only the microtiter wells provided with the kit.
- Rinse all detergent residue from glassware.
- Use deionized water of the highest quality.
- Do not mix reagents from different kits.
- The buffers and reagents in this kit may contain preservatives or other chemicals. Care should be taken to avoid direct contact with these reagents.
- Do not mouth pipette or ingest any of the reagents.
- Do not smoke, eat, or drink when performing the assay or in areas where samples or reagents are handled.
- Dispose of tetra-methylbenzidine (TMB) containing solutions in compliance with local regulations.
- Avoid contact with the acidic Stop Solution and Substrate Solution, which contains hydrogen peroxide.
- Wear gloves and eye protection when handling immunodiagnostic materials and samples of human origin, and these reagents. In case of contact with the Stop Solution and the Substrate Solution, wash skin thoroughly with water and seek medical attention, when necessary.
- **Biological samples may be contaminated with infectious agents. Do not ingest, expose to open wounds or breathe aerosols. Wear protective gloves and dispose of biological samples properly.**
- **CAUTION: Sulfuric Acid is a strong acid. Wear disposable gloves and eye protection when handling Stop Solution.**

---

## Sample Collection and Preparation

---

**Cell culture supernatant:** Remove any particulates by centrifugation and assay immediately or aliquot and store samples at below  $-70^{\circ}\text{C}$ . Avoid repeated freeze-thaw cycles.

**Other biological samples:** MBL has not tested.

(e.g. Remove any particulates by centrifugation and assay immediately or aliquot and store samples at below  $-70^{\circ}\text{C}$ . Avoid repeated freeze-thaw cycles. Individual users should determine appropriate conditions when using other types of samples.)

---

## Detailed Protocol

---

The MBL Research Product **CircuLex S100A4 ELISA Kit** is provided with removable strips of wells so the assay can be carried out on separate occasions using only the number of strips required for the particular determination. Since experimental conditions may vary, an aliquot of the S100A4 Standard within the kit, should be included in each assay as a calibrator. Disposable pipette tips and reagent troughs should be used for all liquid transfers to avoid cross-contamination of reagents or samples.

### Preparation of Working Solutions

All reagents need to be brought to room temperature prior to the assay. Assay reagents are supplied ready-to-use, with the exception of **10X Wash Buffer** and **S100A4 Standard**.

1. Prepare a working solution of Wash Buffer by adding 100 mL of the **10X Wash Buffer** to 900 mL of deionized (distilled) water (ddH<sub>2</sub>O). Mix well. Store at 4°C for two weeks or -20°C for long-term storage.
2. Reconstitute **S100A4 Standard** with **X\* mL** of ddH<sub>2</sub>O. The concentration of the human S100A4 in vial should be **960 ng/mL**, which is referred to as a **Master Standard** of human S100A4.

**\*The amount is changed depending on lot. See the real "User's Manual" included in the kit box.**

Prepare Standard Solutions as follows:

Use the **Master Standard** to produce a dilution series (below). Mix each tube thoroughly before the next transfer. The 24 ng/mL standard (Std.1) serves as the highest standard. The **Dilution Buffer** serves as the zero standard (Blank).

	Volume of Standard	Dilution Buffer	Concentration
Std.1	15 µL of Master Standard	585 µL	24 ng/mL
Std.2	300 µL of Std. 1 (24 ng/mL)	300 µL	12 ng/mL
Std.3	300 µL of Std. 2 (12 ng/mL)	300 µL	6 ng/mL
Std.4	300 µL of Std. 3 (6 ng/mL)	300 µL	3 ng/mL
Std.5	300 µL of Std. 4 (3 ng/mL)	300 µL	1.5 ng/mL
Std.6	300 µL of Std. 5 (1.5 ng/mL)	300 µL	0.75 ng/mL
Std.7	300 µL of Std. 6 (0.75 ng/mL)	300 µL	0.375 ng/mL
Blank	-	300 µL	0 ng/mL

**Note:** Do not use a Repeating pipette. Change tips for every dilution. Wet tip with Dilution Buffer before dispensing. Unused portions of Standards should be aliquoted and stored at below -70°C immediately. Avoid multiple freeze and thaw cycles.

### Sample Preparation

Dilute samples with **Dilution Buffer**.

- Samples require a neat to two- fold serial dilution.

## Assay Procedure

1. Remove the appropriate number of microtiter wells from the foil pouch and place them into the well holder. Return any unused wells to the foil pouch, refold, seal with tape and store at 4°C.
2. Dilute samples with **Dilution Buffer**. (See "Sample Preparation" above.)
3. Pipette **100 µL** of **Standard Solutions (Std1-Std7, Blank)** and **diluted samples** in duplicates, into the appropriate wells.
4. Incubate the wells **at room temperature (ca.25°C) for 60 minutes, shaking at ca. 300 rpm on an orbital microplate shaker.**
5. Wash 4-times by filling each well with Wash Buffer (350 µL) using a squirt bottle, multi-channel pipette, manifold dispenser or microplate washer.
6. Add **100 µL** of **HRP conjugated Detection Antibody** into each well.
7. Incubate the wells **at room temperature (ca.25°C) for 60 minutes, shaking at ca. 300 rpm on an orbital microplate shaker.**
8. Wash 4-times by filling each well with Wash Buffer (350 µL) using a squirt bottle, multi-channel pipette, manifold dispenser or microplate washer.
9. Add **100 µL** of **Substrate Reagent**. Avoid exposing the microtiter plate to direct sunlight. Covering the plate with e.g. aluminum foil is recommended. Return Substrate Reagent to 4°C immediately after the necessary volume is removed.
10. Incubate the wells **at room temperature (ca.25°C) for 10-20 minutes, shaking at ca. 300 rpm on an orbital microplate shaker.** The incubation time may be extended up to 30 minutes if the reaction temperature is below than 20°C.
11. Add **100 µL** of **Stop Solution** to each well in the same order as the previously added Substrate Reagent.
12. Measure absorbance in each well using a spectrophotometric microplate reader at dual wavelengths of 450/540 nm. Dual wavelengths of 450/550 or 450/595 nm can also be used. Read the microplate at 450 nm if only a single wavelength can be used. Wells must be read within 30 minutes of adding the Stop Solution.

**Note-1:** Complete removal of liquid at each step is essential to good performance. After the last wash, remove any remaining Wash Buffer by aspirating or decanting. Invert the plate and blot it against clean paper towels.

**Note-2:** Reliable standard curves are obtained when either O.D. values do not exceed 0.2 units for the blank (zero concentration), or 2.5 units for the highest standard concentration.

**Note-3:** If the microplate reader is not capable of reading absorbance greater than the absorbance of the highest standard, perform a second reading at 405 nm. A new standard curve, constructed using the values measured at 405 nm, is used to determine S100A4 concentration of off-scale samples. The readings at 405 nm should not replace the on-scale readings at 450 nm.

---

## Calculations

---

Average the duplicate readings for each Standard Solution, control, and sample and subtract the average zero standard optical density. Plot the optical density for the standards versus the concentration of the standards and draw the best curve. The data can be linearized by using log/log paper and regression analysis may be applied to the log transformation. To determine the S100A4 concentration of each sample, first find the absorbance value on the y-axis and extend a horizontal line to the standard curve. At the point of intersection, extend a vertical line to the x-axis and read the corresponding S100A4 concentration. If the samples have been diluted, the concentration read from the standard curve must be multiplied by the dilution factor.

1. The dose-response curve of this assay fits best to a sigmoidal four-parameter logistic equation. The results of unknown samples can be calculated with any computer program having a four-parameter logistic function. It is important to make an appropriate mathematical adjustment to accommodate for the dilution factor.
2. Most microtiter plate readers perform automatic calculations of analyte concentration. The calibration curve is constructed by plotting the absorbance (Y) of calibrators versus log of the known concentration (X) of calibrators, using the four-parameter function. Alternatively, the logit log function can be used to linearize the calibration curve (i.e. logit of absorbance (Y) is plotted versus log of the known concentration (X) of calibrators).

---

## Measurement Range

---

The measurement range is 0.375 ng/mL to 24 ng/mL. Any sample reading higher than the highest standard should be diluted with Dilution Buffer in higher dilution and re-assayed. Dilution factors need to be taken into consideration in calculating the human S100A4 concentration.

---

## Troubleshooting

---

1. All samples and controls should be assayed in duplicate, using the protocol described in the **Detailed Protocol**. Incubation times or temperatures significantly different from those specified may give erroneous results.
2. Poor duplicates, accompanied by elevated values for wells containing no sample, indicate insufficient washing. If all instructions in the **Detailed Protocol** were followed accurately, such results indicate a need for washer maintenance.
3. Overall low signal may indicate that desiccation of the plate has occurred between the final wash and addition of Substrate Reagent. Do not allow the plate to dry out. Add Substrate Reagent immediately after wash.

---

## Reagent Stability

---

All of the reagents included in the MBL Research Product **CircuLex S100A4 ELISA Kit** have been tested for stability. Reagents should not be used beyond the stated expiration date. Upon receipt, kit reagents should be stored at 4°C, except the reconstituted S100A4 Standard must be stored at below -70°C. Coated assay plates should be stored in the original foil bag sealed by the zip lock and containing a desiccant pack.

---

## Assay Characteristics

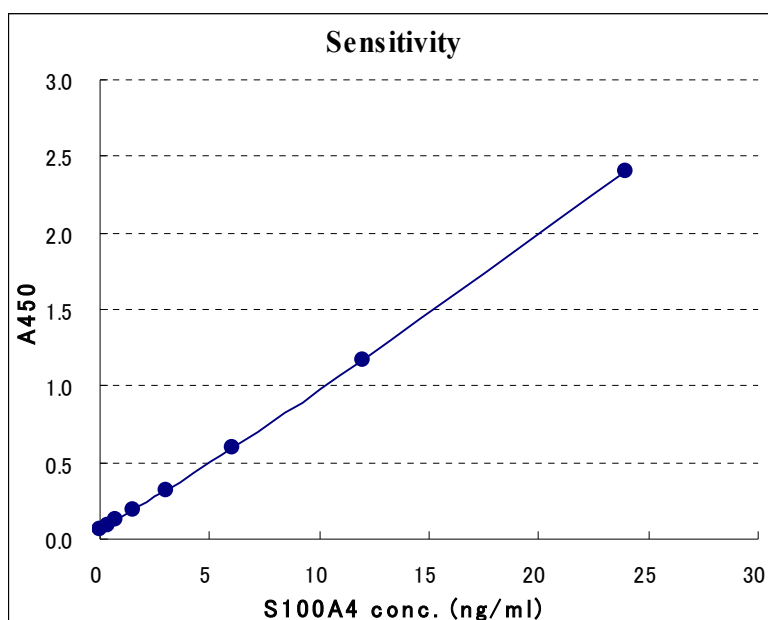
---

### 1. Sensitivity

The limit of detection (defined as such a concentration of S100A4 giving absorbance higher than mean absorbance of blank\* plus three standard deviations of the absorbance of blank: A blank + 3SD blank) is better than 0.28 ng/ml of sample.

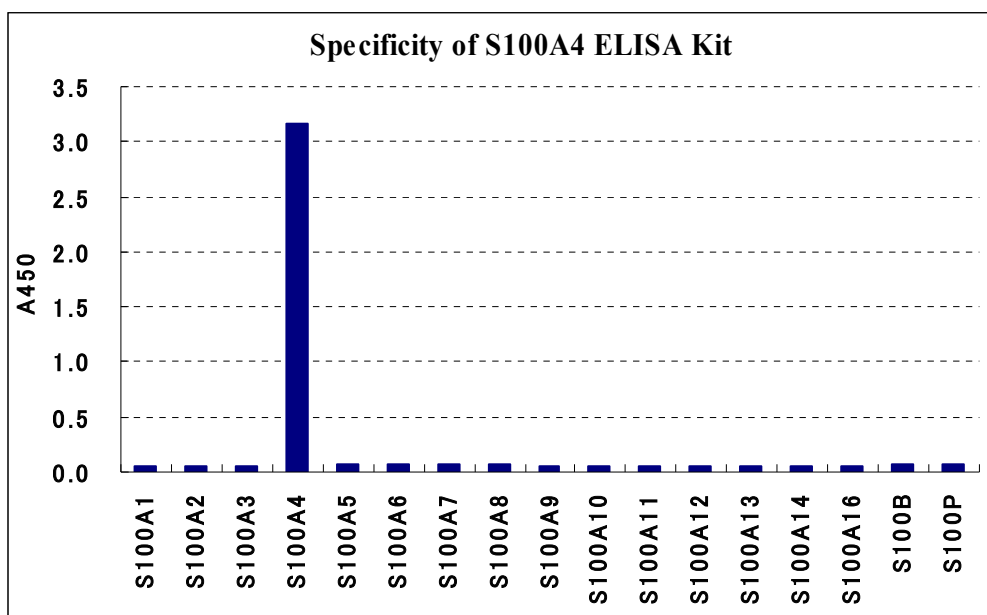
\* Dilution Buffer was pipetted into blank wells.

Eighty assays were evaluated and the minimum detectable dose (MDD) of S100A4 ranged from 0.196 - 0.352 ng/mL. The mean MDD was 0.282 ng/mL. The MDD was determined by adding three standard deviations to the mean optical density value of twenty zero standard replicates and calculating the corresponding concentration.



## 2. Specificity

The antibodies in the CircuLex S100A4 ELISA Kit are highly specific of S100A4, with no detectable cross-reactivities to all S100 proteins except S100A4. 100 ng/ml of recombinant S100 proteins were measured by the CircuLex S100A4 ELISA kit.



## 3. Precision

### Intra-assay Precision (Precision within an assay)

Three samples of known concentration were tested eight times on one plate to assess intra-assay precision.

- Intra-assay (Within-Run, n=8) CV=5.8 %

### Inter-assay Precision (Precision between assays)

Three samples of known concentration were tested in four separate assays to assess inter-assay precision.

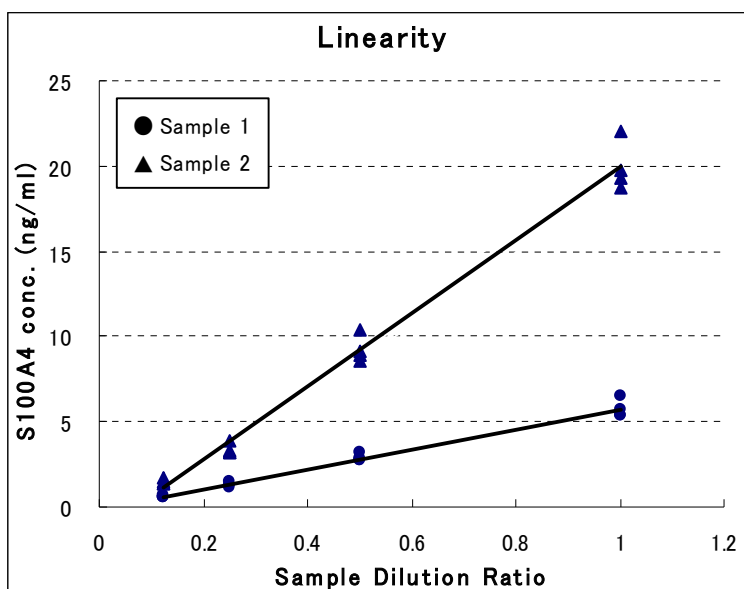
- Inter-assay (Run-to-Run, n=4) CV=7.2 %

## 4. Spiking Recover

Cell culture media were spiked with different amounts of S100A4 and assayed. The recovery of S100A4 spiked to levels throughout the range of the assay was evaluated.  
 Sample Average % Recovery Range  
 Cell culture media (n=4) 103%, 93%, 84%, 113%

### 5. Linearity

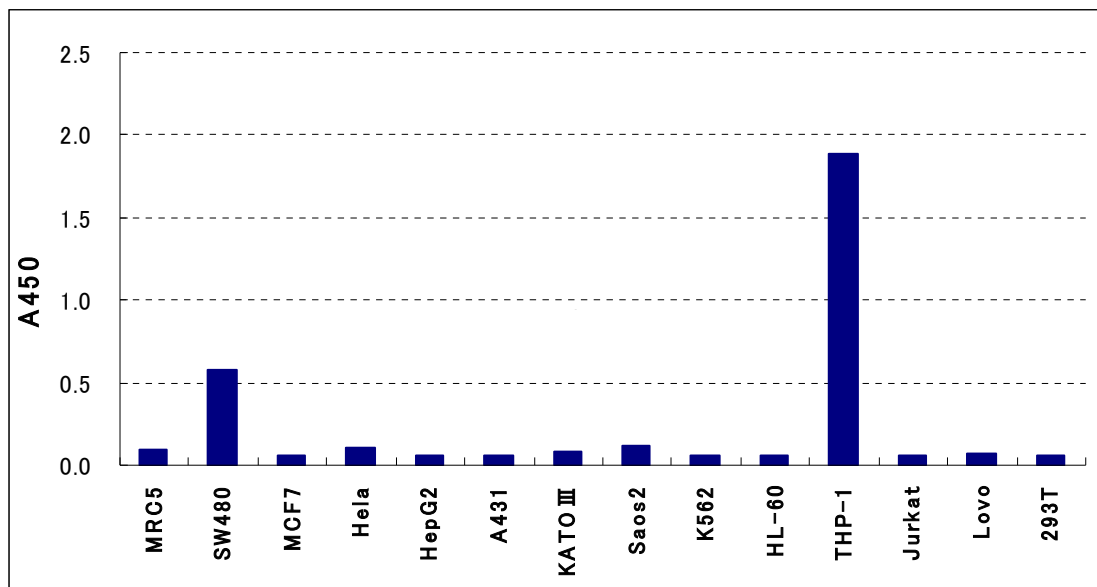
To assess the linearity of the assay, samples containing and/or spiked with high concentrations of S100A4 were serially diluted with the Dilution Buffer to produce samples with values within the dynamic range of the assay.



### Example of Test Results

Fig.1 S100A4 level in culture supernatant of several cell lines

Measured S100A4 level in culture supernatant of 80% confluent cultured cell, diluted 2-fold with dilution buffer.



---

## References

---

1. Hilt, D., and Kligman, D. (1991) in *Novel Calcium-binding Proteins: Fundamentals and Clinical Implications* (Heizmann, C. W., ed) , pp. 65-103, Springer-Verlag, Berlin
2. Dunnington, D. J. (1984) *The Development and Study of Single Cell-cloned Metastasizing Mammary Tumour Cell Systems in the Rat*. Ph.D. thesis , University of London
3. Ebralidze, A., Tulchinsky, E., Grigorian, M., Afanayeva, A., Senin, V., Revazova, E., and Lukanidin, E. (1989) *Genes Dev.* 3, 1086-1093
4. Nikitenko, L., Lloyd, B., Rudland, P., Fear, S., and Barraclough, R. (2000) *Int. J. Cancer* 86, in press
5. Davies, B., Davies, M., Gibbs, F., Barraclough, R., and Rudland, P. (1993) *Oncogene* 8, 999-1008
6. Lloyd, B., Platt-Higgins, A., Rudland, P., and Barraclough, R. (1998) *Oncogene* 17, 465-473
7. Davies, M., Rudland, P., Robertson, L., Parry, E., Jolicoeur, P., and Barraclough, R. (1996) *Oncogene* 13, 1631-1637
8. Ambartsumian, N., Grigorian, M., Larsen, F., Karlstrom, O., Sidenius, N., Rygaard, J., Georgiev, G., and Lukanidin, E. (1996) *Oncogene* 13, 1621-1630
9. Takenaga, K., Nakanishi, H., Wada, K., Suzuki, M., Matsuzaki, O., Matsuura, A., and Endo, H. (1997) *Clin. Cancer Res.* 3, 2309-2316

For more information, please visit our website at  
<https://ruo.mbl.co.jp/>.

### MANUFACTURED BY

 **MBL MEDICAL & BIOLOGICAL LABORATORIES CO., LTD.**

URL: <https://ruo.mbl.co.jp>  
E-mail: [support@mbl.co.jp](mailto:support@mbl.co.jp)

**CycLex/CircuLex products are supplied for research use only. CycLex/CircuLex products and components thereof may not be resold, modified for resale, or used to manufacture commercial products without prior written approval from MBL. To inquire about licensing for such commercial use, please contact us via email.**